

CITY OF HENDERSONVILLE
2026 STORMWATER IMPROVEMENTS MOUNTAIN VIEW ST, KANUGA RD, AND 4TH AVENUE

ADDENDUM NO. 1
December 18, 2025

The attention of all Bidders is directed to the following revisions and clarifications, which shall be considered part of the Contract Documents.

Plan Revisions

- Sheet C-4 has been revised to include modifications near the discharge location, including additional storm drainage pipe and tree stump removal.
- The plan set has been updated to include the applicable City of Hendersonville and NCDOT standard details referenced in the plans.

Bid Schedule Revision

- The Bid Schedule has been revised to include a separate line item for tree stump removal.
- The quantity for item 8, 18" Corrugated HDPE Stormwater Pipe, has been increased by 12 LF.

Bid Schedule Clarification

- The Base Bid Total and Alternate 1 Total each represent the total construction cost for the entire project.
- The Base Bid shall include the total bid price for the project utilizing block stormwater structures.
- Alternate 1 shall include the total bid price for the project utilizing precast stormwater structures.

Question and Response

Question:

Will a bid bond be required for this project?

Response:

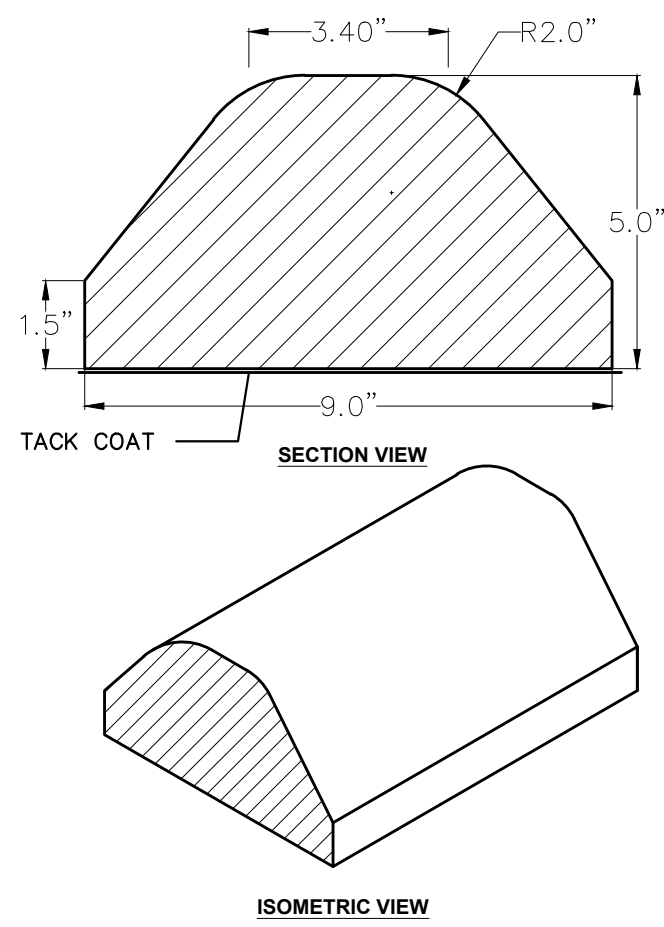
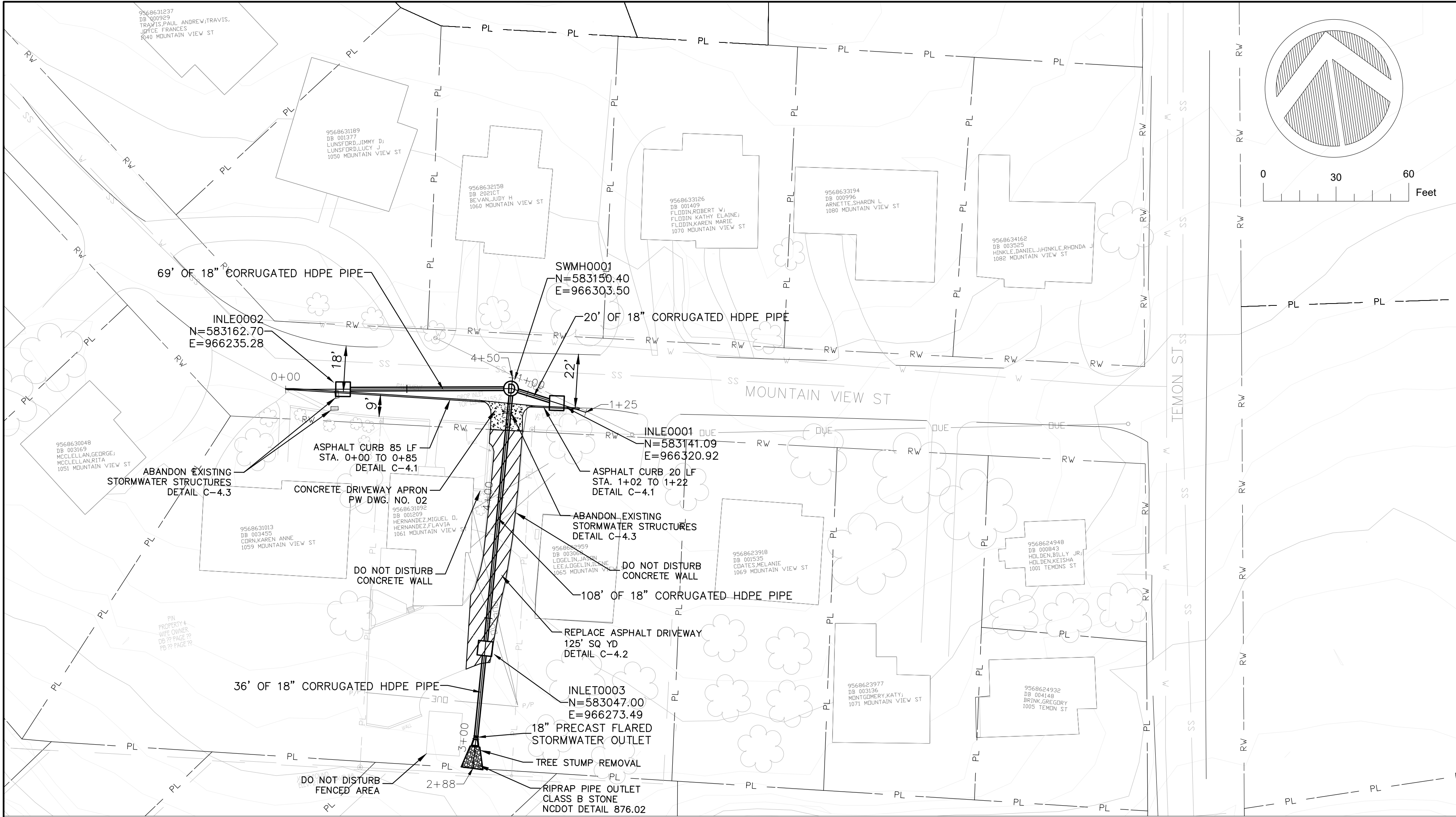
A bid bond will not be required for this project, as it is being informally bid. A Performance Bond and Payment Bond will be required as a condition of contract execution.

Each bidder is required to acknowledge receipt of this Addendum No.1 in the space provided in the Bidding Documents.

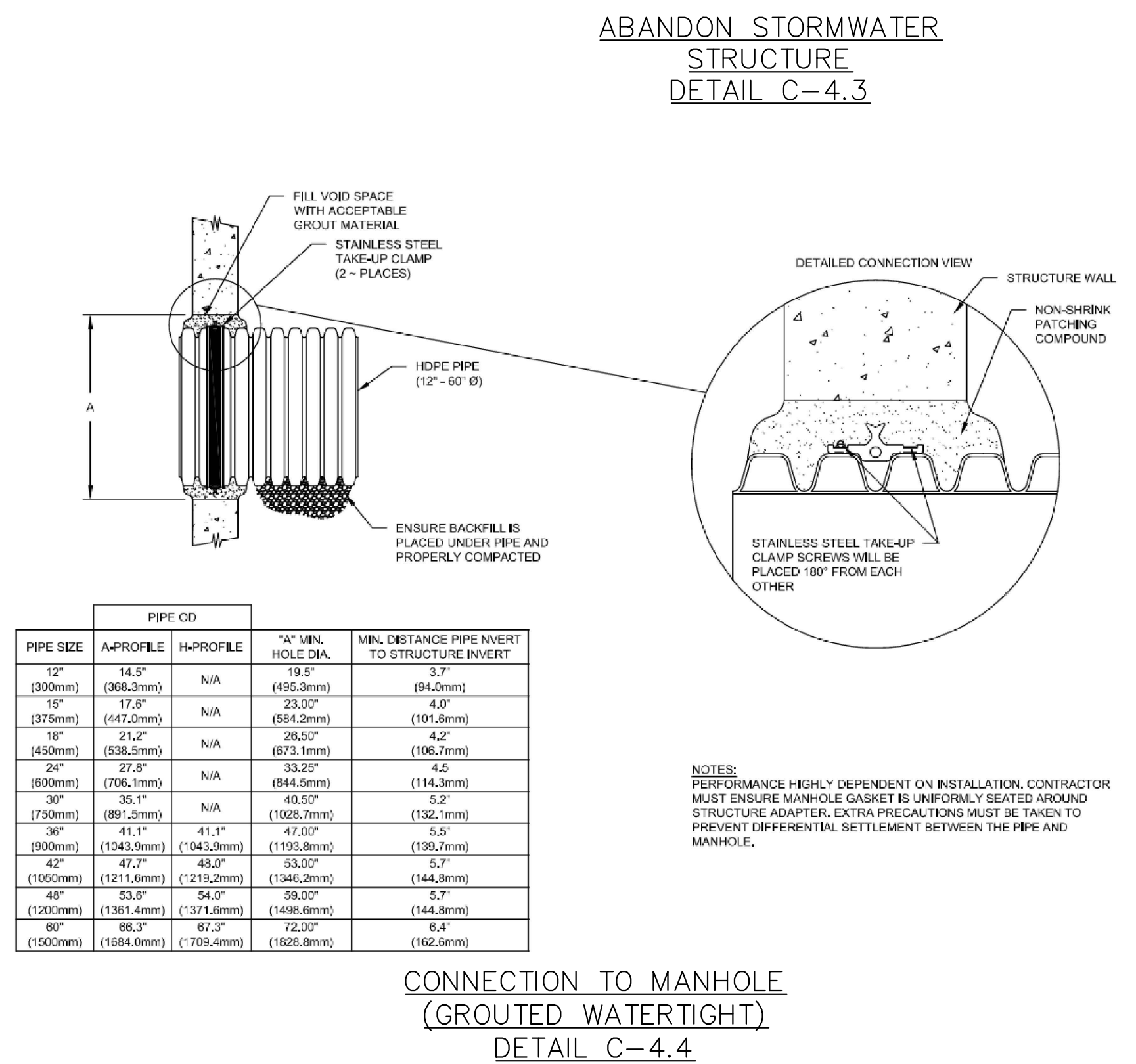
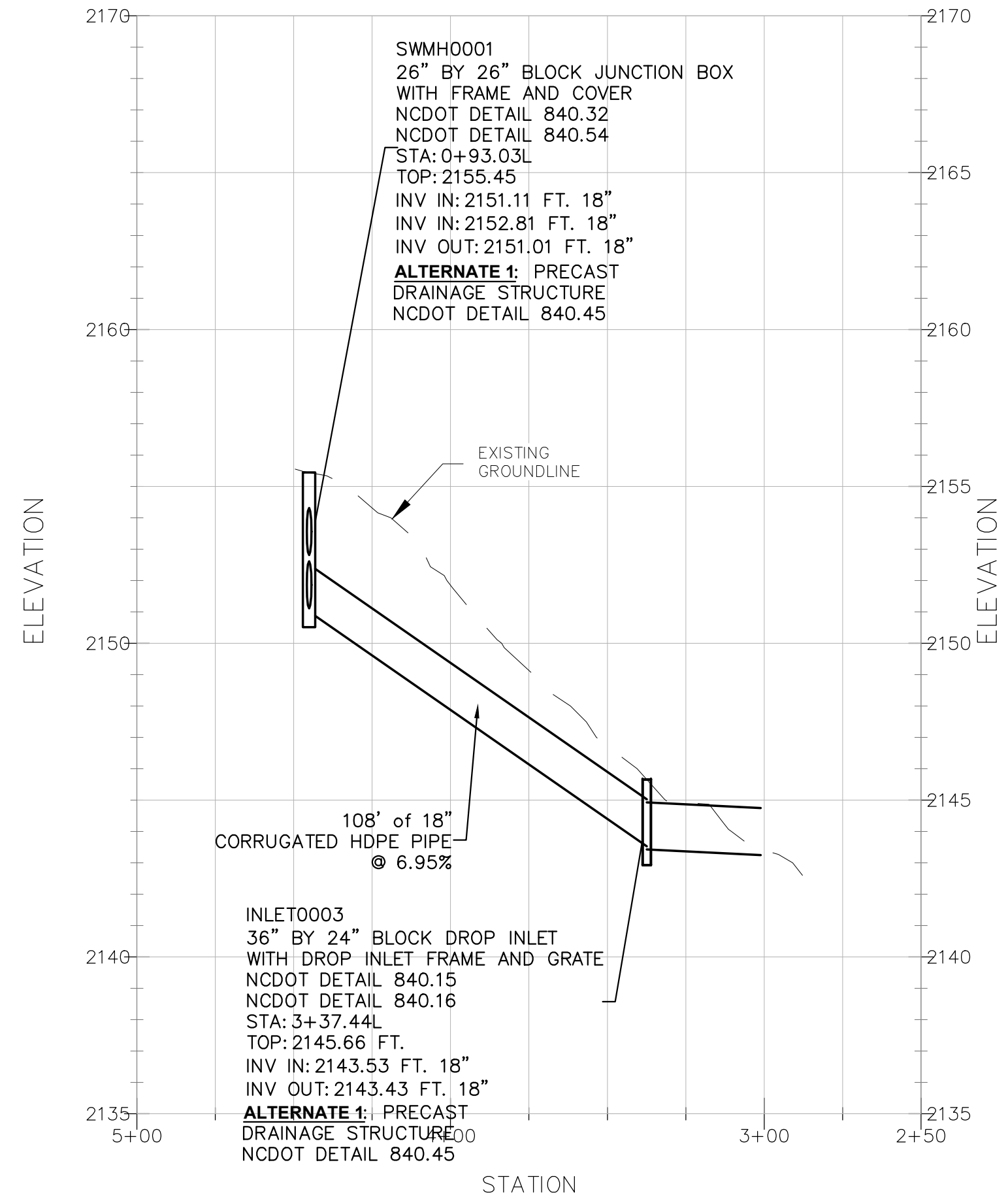
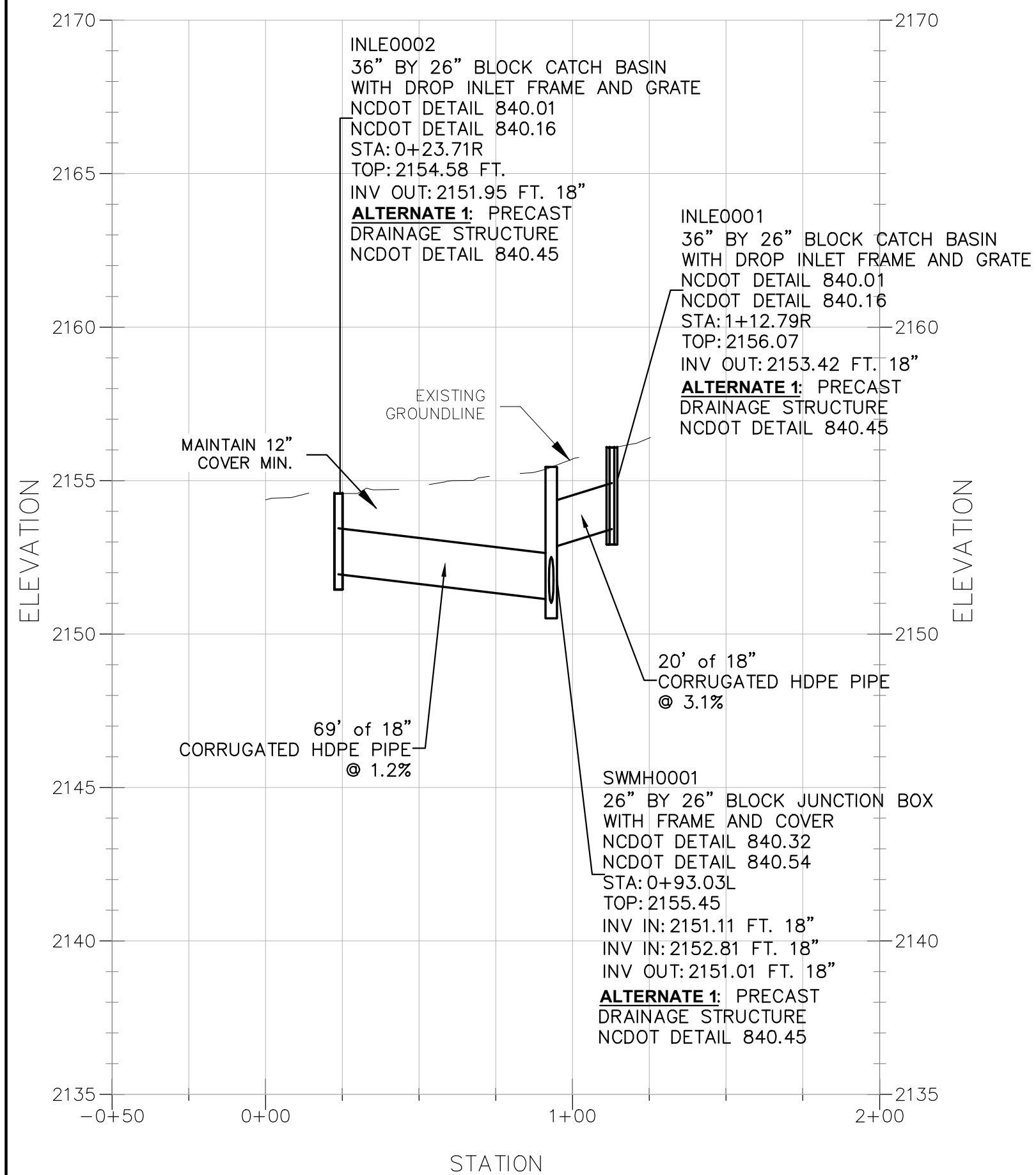
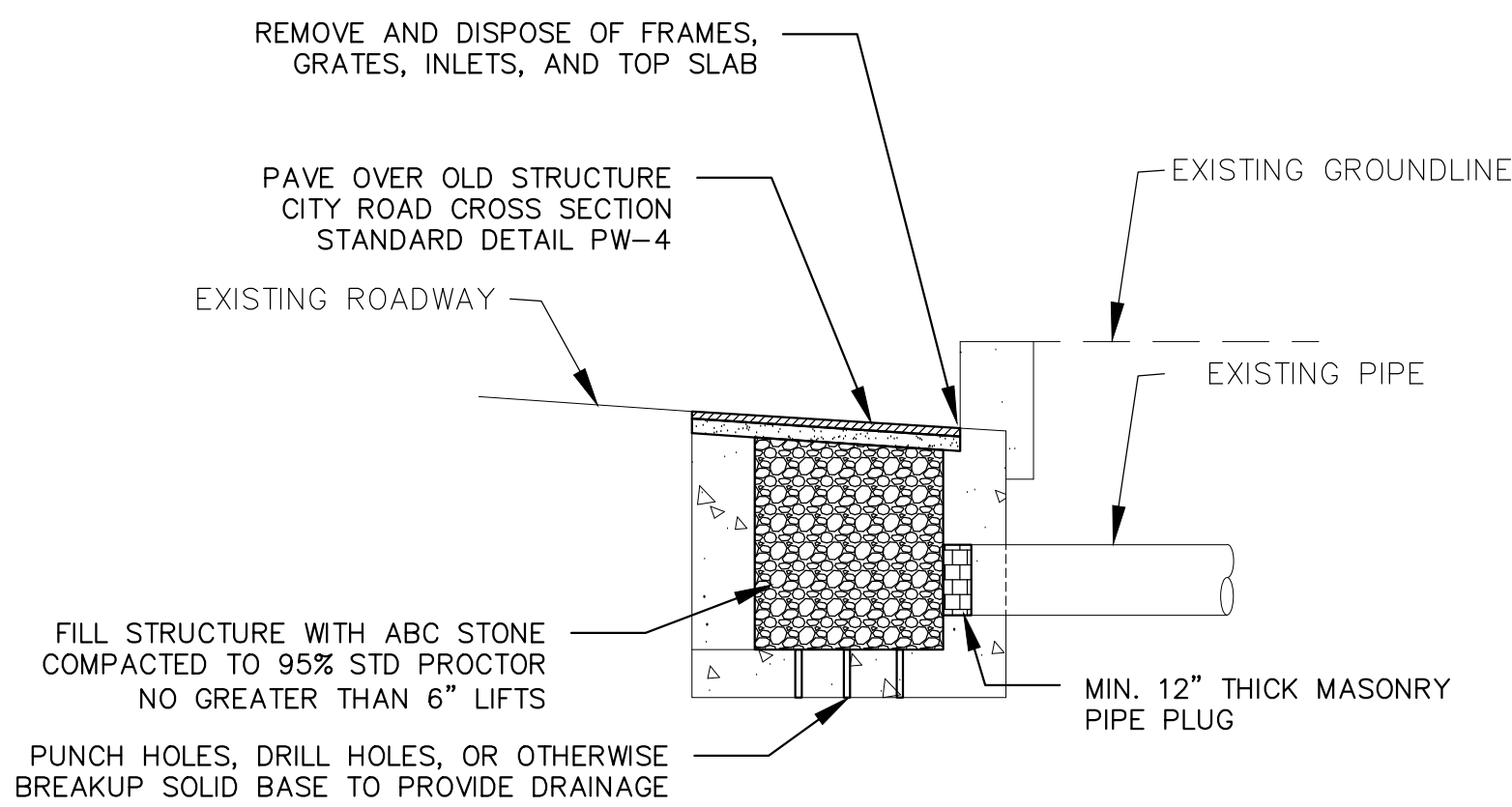
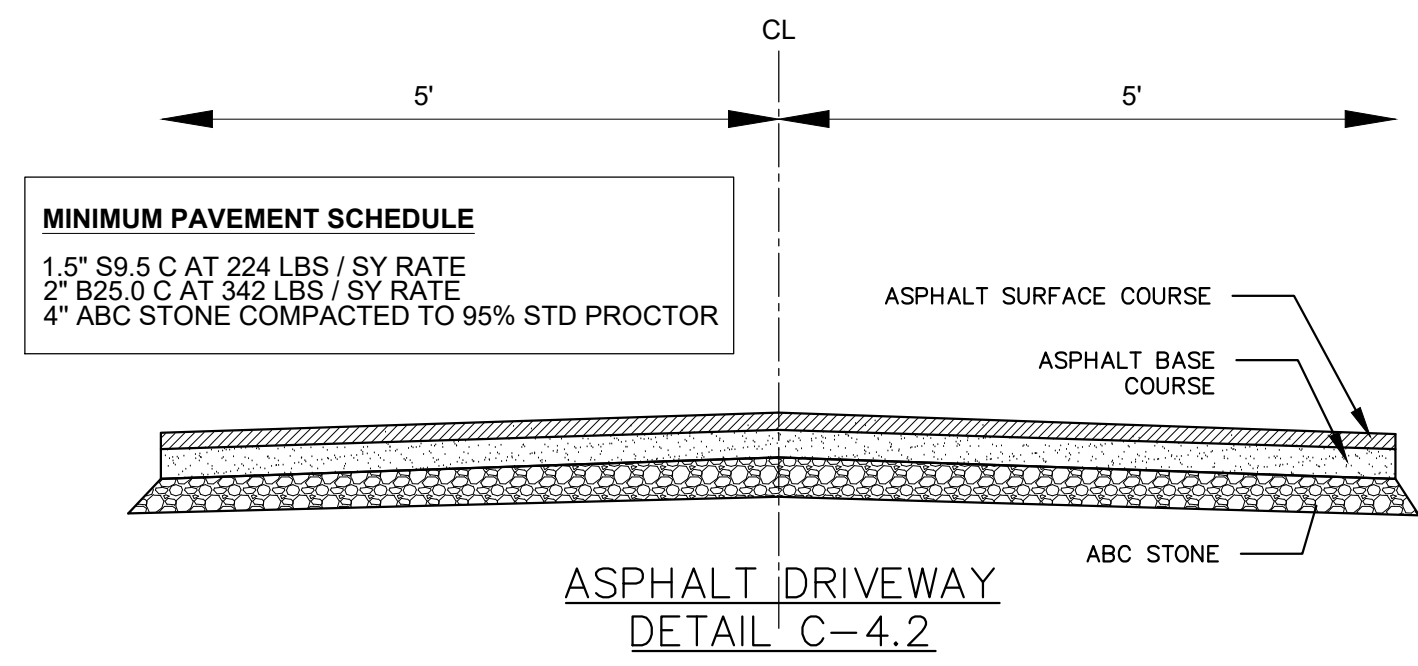
CITY OF HENDERSONVILLE



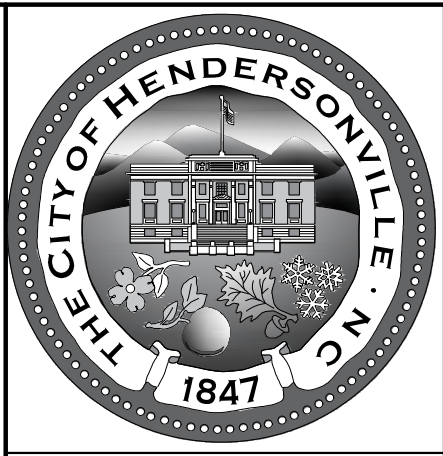
Richard Shook, PE
Civil Engineer



- NOTES:**
- CLEAN EXISTING PAVEMENT REMOVING DEBRIS, DIRT, DUST, AND LOOSE AGGREGATE.
 - ASPHALT MIX DESIGN FOR ASPHALT CURB SHALL BE HMA CLASS 3/8\"/>
 - TACK COAT PLACED WITH SYNTHETIC BROOM SHALL BE PLACED END TO END AND SIDE TO SIDE SUCH THAT WHEN CURB IS PLACED A SMALL AMOUNT OF BONDING AGENT CAN BE SEEN ON BOTH SIDES OF THE CURB.
 - ALL OUTSIDE CORNERS AND RADII, UP TO 12 FOOT RADII, SHALL HAVE A "BULLNOSE" (ADDED CONCRETE TO REINFORCE CURBING). BULLNOSE SHALL BE FLUSH WITH THE TOP OF THE CURB AND EXTEND THE ENTIRE RADIUS. IN THE CASE OF OUTSIDE CORNERS (FACING PARKING AREA), BULLNOSE SHALL EXTEND NO LESS THAN 12 INCHES BACK FROM THE CORNER OF THE CURB. ALL SHALL BE BEVELED AT 45 DEGREES TO LESSEN IMPACT DAMAGE. NO STEEL SHALL BE ALLOWED UNLESS MANDATED BY ARCHITECT, ENGINEER OR MUNICIPAL AGENCY.



PIPE OD		MIN. DISTANCE PIPE INVERT TO STRUCTURE INVERT	
PIPE SIZE	A-PROFILE	H-PROFILE	
12" (30mm)	14.5" (366.3mm)	N/A	9.5" (241.3mm)
14" (35mm)	17.8" (447.7mm)	N/A	23.0" (584.2mm)
16" (40mm)	21.2" (538.2mm)	N/A	26.5" (673.1mm)
24" (60mm)	27.8" (706.1mm)	N/A	33.25" (844.5mm)
30" (75mm)	35.1" (895.7mm)	N/A	40.5" (1028.7mm)
36" (90mm)	41.1" (1043.9mm)	41.1" (1043.9mm)	47.0" (1193.8mm)
42" (105mm)	47.1" (1211.6mm)	47.1" (1211.6mm)	53.5" (1368.1mm)
48" (120mm)	53.8" (1368.1mm)	54.0" (1371.5mm)	60.0" (1524.0mm)
54" (135mm)	60.7" (1546.0mm)	61.2" (1559.5mm)	67.0" (1701.8mm)
60" (150mm)	68.2" (1731.5mm)	68.7" (1769.4mm)	74.0" (1880.2mm)



CITY OF HENDERSONVILLE, NC
"The City of Four Seasons"

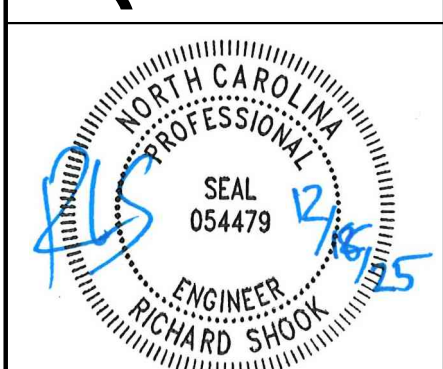
City of Hendersonville Engineering Department
305 Williams Street, Suite 202
Hendersonville, NC 28033
(828) 697-3000 (office)
(828) 697-3055 (fax)
www.cityofhendersonville.org

NO.	DATE	DESCRIPTION	BY

STORMWATER CONSTRUCTION

1061 MOUNTAIN VIEW

PLAN, PROFILE & DETAILS



JMB RLS BS 2025.12.21
Dwn. Dsgn. Chkd. YYYY.MM.DD

Project No.: **25107**

Revision: **00**

Sheet: **04** of **06**

Drawing No.
C-4

2026 STORMWATER IMPROVEMENTS: MOUNTAIN VIEW ST, KANUGA RD, 4TH AVE
CITY OF HENDERSONVILLE

ITEM	ITEM DESCRIPTION	UNIT OF MEASURE	ESTIMATED QUANTITY	UNIT PRICE	PRICE
1	Mobilization (shall not exceed 3% of total bid)	LS	1		
2	Traffic Control	LS	1		
3	Erosion Control	LS	1		

1061 MOUNTAIN VIEW ST					
4	Abandon Existing Stormwater Structures	EA	3		
5	36" by 26" Block Catch Basin with Frame and Grate	EA	2		
6	26" by 26" Block Junction Box with Frame and Cover	EA	1		
7	36" by 24" Block Drop Inlet with Drop Inlet Frame and Grate	EA	1		
8	18" Corrugated HDPE Stormwater Pipe	LF	232		
9	18" Precast Flared Stormwater Outlet	EA	1		
10	Riprap Pipe Outlet (Class B Stone)	EA	1		
11	Asphalt Curb	LF	105		
12	Concrete Driveway Apron	SY	20		
13	Asphalt Driveway	SY	125		
14	Tree Stump Removal	EA	1		

821 KANUGA RD					
15	36" by 24" Block Drop Inlet with Frame and Grate	EA	1		
16	24" by 24" Block Junction Box with Frame and Cover	EA	1		
17	15" Corrugated HDPE Stormwater Pipe	LF	155		
18	Connect Existing Stormwater Pipes	EA	1		
19	Connect to Existing Curb Inlet (Kanuga Rd)	EA	1		

832 4TH AVE					
20	12" Masonry Pipe Plug	EA	1		
21	36" by 24" Block Drop Inlet with Frame and Grate	EA	1		
22	36" by 24" Block Junction Box with Frame and Cover	EA	1		
23	36" by 26" Block Catch Basin with Grate and Hood	EA	1		
24	24" Corrugated HDPE Stormwater Pipe	LF	75		
25	Connect Existing Stormwater Pipes	EA	3		
26	Flowable Fill 8" Sanitary Sewer Line	CY	3		
27	Concrete Curb Replacement (Detail C-6.1)	LF	40		

BASE BID: TOTAL ESTIMATED CONSTRUCTION COST

ALTERNATE 1: PRECAST STORMWATER BOXES					
28	Precast Stormwater Box (NCDOT Dtl. 840.45) with frame, grate, and cover as needed (NCDOT Dtls. 840.3, 840.16, and 840.54) in place of block structures (replace bid items 4,5,6,14,15,20,21, & 22)	EA	9		

ALTERNATE 1: TOTAL ESTIMATED CONSTRUCTION COST