

# POLLINATOR TRAIL MAP

Please visit:  
[hendersonvillenc.gov/bee-city](http://hendersonvillenc.gov/bee-city) to  
access the GoogleMaps link for  
detailed directions on location stops

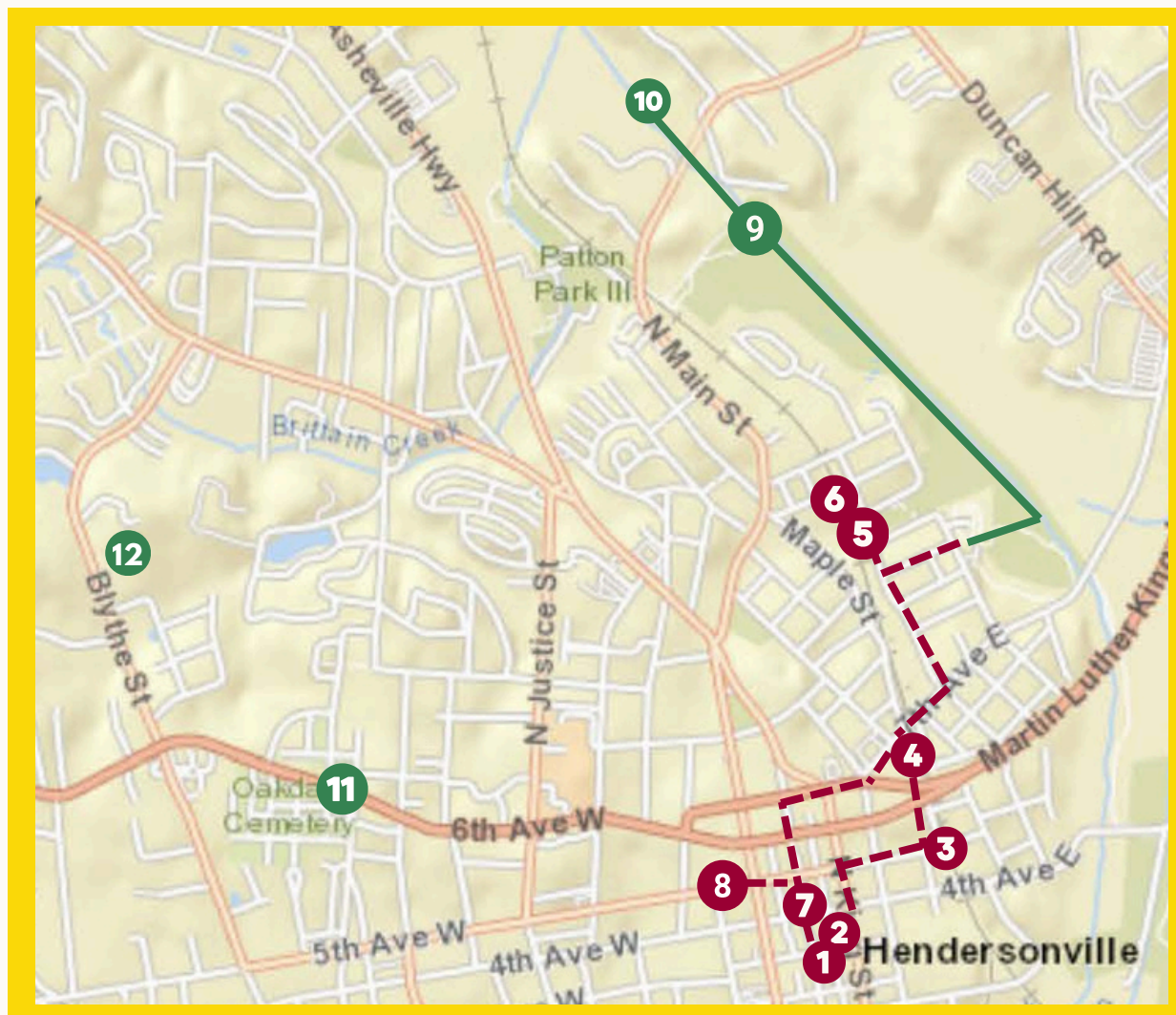


**BEE CITY USA®**  
HENDERSONVILLE, NC

## POLLINATOR TRAIL

Plan your own pollinator-friendly adventure! This ongoing self-guided trail is your guide to pollinator friendly gardens, art, wildlife hot spots and more that highlight the importance of bees, butterflies, and other pollinators.

The majority of the trail is assessible by walking or biking and starts in downtown Hendersonville but feel free to plan your route however you like and enjoy Hendersonville's pollinator adventure!



# POLLINATOR TRAIL

**Plan your own pollinator-friendly adventure!** This ongoing self-guided trail is your guide to eco-friendly gardens, green spaces, food, and art initiatives by the City of Hendersonville that highlight the importance of bees, butterflies, and other pollinators.

The **RED ROUTE** is entirely walkable and takes approximately 2 miles to complete roundtrip. The **GREEN ROUTE** are additional add ons which takes visitors along the Oklawaha Greenway and adds on an additional 2.8 miles. Visitors can also choose to visit location #11 and #12 however, a vehicle is required.



## 1 THE GOOD OF THE HIVE MURAL

Location: Within the Azalea Public Parking Lot (facing Third Ave. E. between N. Main Street and King Street) at the Hands On! Children's Museum

Entirely funded by donations from the community, the mural stirs curiosity and inspires actions to help sustain healthy ecosystems. The hive of bees also serves as a metaphor for recognizing and celebrating the power in human connection.

## 2 BEE MURAL DEMONSTRATION POLLINATOR GARDENS

Location: Azalea Parking Lot / Hands On! Children's Museum / The Good of the Hive Bee & Pollinator Mural (facing Third Ave. E. between N. Main Street and King Street).

These gardens, maintained by the Tree Board feature pollinator-friendly perennials, herbs, and trees which serves as a working demonstration plot for the community. Plants are labeled so that visitors can reference the types of plants they may install in their own gardens and yards to protect and nourish pollinators.

## 3 HENDO BEELINE SIDEWALK MURAL

Location: Along Maple Street between 5th Avenue and the Historic Train Depot

Pedestrians of all ages are invited to hop, skip, and stroll along a honey-combed path stretching over 800 feet and painted with four seasons of flowers, all vital to pollinators. The design includes flowers, children's art sections filled with different pollinators and other wildlife that contribute to the biodiversity of this painted garden path.

## 4 SUSTAINABILITY DEMONSTRATION STATION

Location: At the same location as the Hendersonville Farmers Market at 650 Maple Street, Hendersonville

The Sustainability Demonstration Station, lead by the Environmental Sustainability Board features multiple sustainability practices community members can implement at their own homes. The site focuses on composting but also includes several pollinator beds.

For more information on demonstration days and more, visit [hendersonvillenc.gov/environmental-sustainability-board](https://hendersonvillenc.gov/environmental-sustainability-board)



## 5 BROOKLYN CREEK BIRD SANCTUARY

Location: Within Sullivan Park along Brooklyn Creek and connecting to the walkway to Oklawaha Greenway.

This bird sanctuary became a reality in 2023, thanks to the original idea by a resident, Crystal Cauley, and owners of Wild Birds Unlimited, Carey and Lutrelle O'Caïn. The project was also sponsored by the City's Environmental Sustainability Board. Several bird houses and bird feeders have been installed and a stream Restoration project is underway along the creek.

## 6 BROOKLYN COMMUNITY GARDEN

Location: Across the street from Sullivan Park near the Boys & Girls Club of Hendersonville in historic 7th Avenue District

This community garden is scheduled to be completed summer 2024 with an expansion and revitalization effort that will include pollinator beds, blueberry bushes, fruit trees, and more pollinator friendly plants, as well as a gathering space all open to the public.

The Green Meadows Community, originally called Brooklyn is a historic black neighborhood established in the late 19th century that grew into a thriving community being the center of local black life and culture. To preserve and honor the legacy of the original community, this garden is named the Brooklyn Community Garden.

## 7 HENDERSONVILLE MAIN STREET POLLINATOR PLANTS

Location: Between 6th Ave. and Allen St.

Hendersonville's Main Street is a linear tree-lined park that supports our pollinator friends. A walk along both sides of the street allows you to enjoy flowering trees, native shrubs, and colorful flowers. You'll see flowering magnolias, bald cypress, smoke tree, and fringe tree along with handsome grasses and shrubs such as laurels and azalea. Flowers from spring to fall play underneath the taller plants and dangle from abundant hanging baskets along side streets.

## 8 HENDERSON COUNTY PUBLIC LIBRARY GARDEN

Location: 301 N Washington St, Hendersonville, NC 28739 on side of building by main entrance

This garden (located on the 3rd Ave side of the library features a variety of annuals, perennials and bulbs as well as a fairy garden for our young and young at heart! Seeds from our Free Seed Library are featured throughout our gardens. As plants go to seed at the end of the season, we share those back with the community. Each plot is maintained by library staff and members of our Garden Club.



## 9 WES BURLINGAME NATIVE PLANT GARDEN

Location: Oklawaha Greenway at the information kiosk at the intersection with the Patton Park access trail.

This garden, maintained by Friends of the Oklawaha Greenway, features more than 30 varieties of native shrubs, trees, grasses, wildflowers, and ferns all labeled to educate visitors passing by. The garden celebrates the life of Westcott "Wes" Burlingame III, a local nurseryman, lecturer, and environmentalist who died in 2019.

## 10 OKLAWAHA GREENWAY POLLINATOR BEDS

Location: Along the Oklawaha Greenway

The City of Hendersonville's 3.5 mile fully paved Oklawaha Greenway winds through wetlands, meadows and forests to connect four parks and is easily accessible from five convenient parking areas. There are several adopt a trail pollinator beds and meadows along the trail.

## 11 BEARCAT LOOP TREE & POLLINATOR PLANTINGS

Location: North side of 6th Ave. W. (U.S 64 W.) at Oakdale Cemetery

The Hendersonville Tree Board has planted over 80 trees and established 7 raised beds along Bearcat Loop. Among these plantings you'll find pawpaw, sourwood, carolina silverbell as well as perennial favorites including milkweed, mountain mint, goldenrod, cardinal flower, black-eyed susan, joe-pye weed and more.

## 12 TRINITY PRESBYTERIAN CHURCH POLLINATOR GARDEN

Location: 900 Blythe St, Hendersonville, NC 28791 - Enter the church grounds at the front entrance with the church sign. Continue straight down the road, following the signs. The garden is to the left against the red brick wall of the church.

Trinity Presbyterian Church created this garden which includes a variety of pollinator-friendly plants and brings bees, beetles, wasps, butterflies and birds buzzing and humming with life in this tiny garden tucked into our 8-acre campus.



**TO VIEW THE HENDERSON COUNTY POLLINATOR TRAIL**



The City of Hendersonville has been a Bee City USA member since 2015. For more information and resources to get in involved, please visit:

[hendersonvillenc.gov/bee-city](https://hendersonvillenc.gov/bee-city)