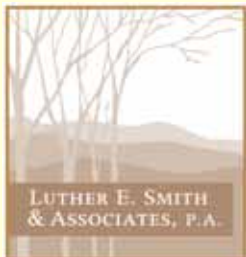




Southside Gateway Park

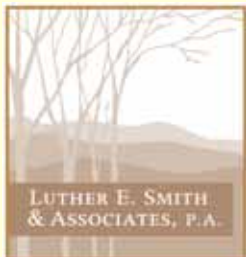
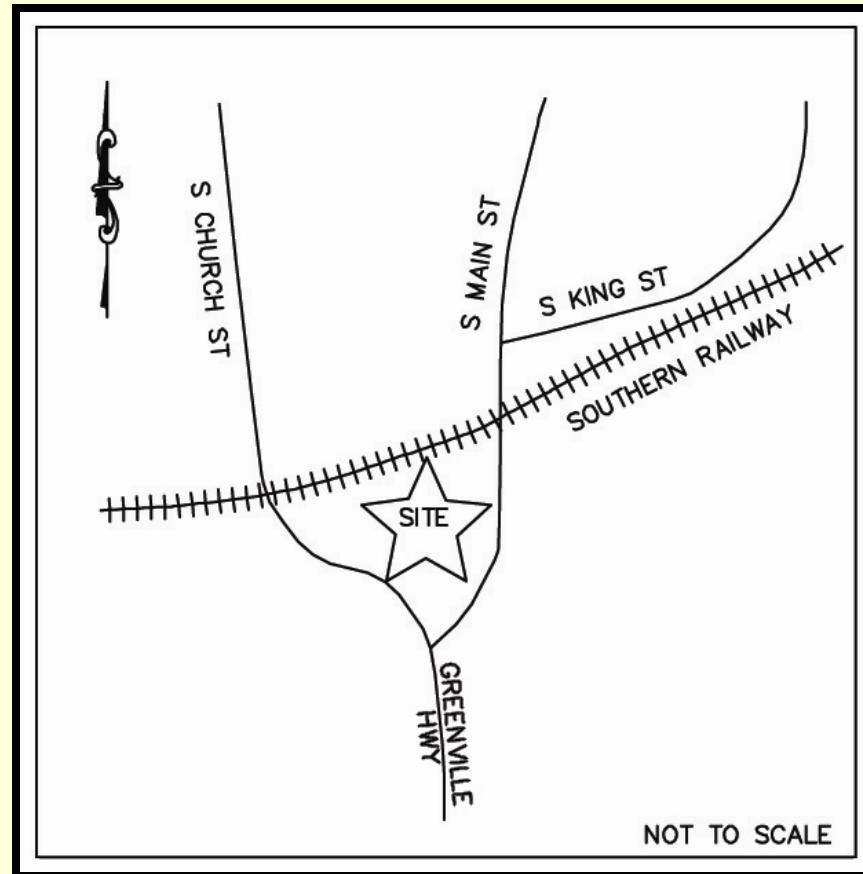
THE CITY OF HENDERSONVILLE

LUTHER E. SMITH & ASSOC. P.A. – LAND PLANNERS / LANDSCAPE ARCHITECTS



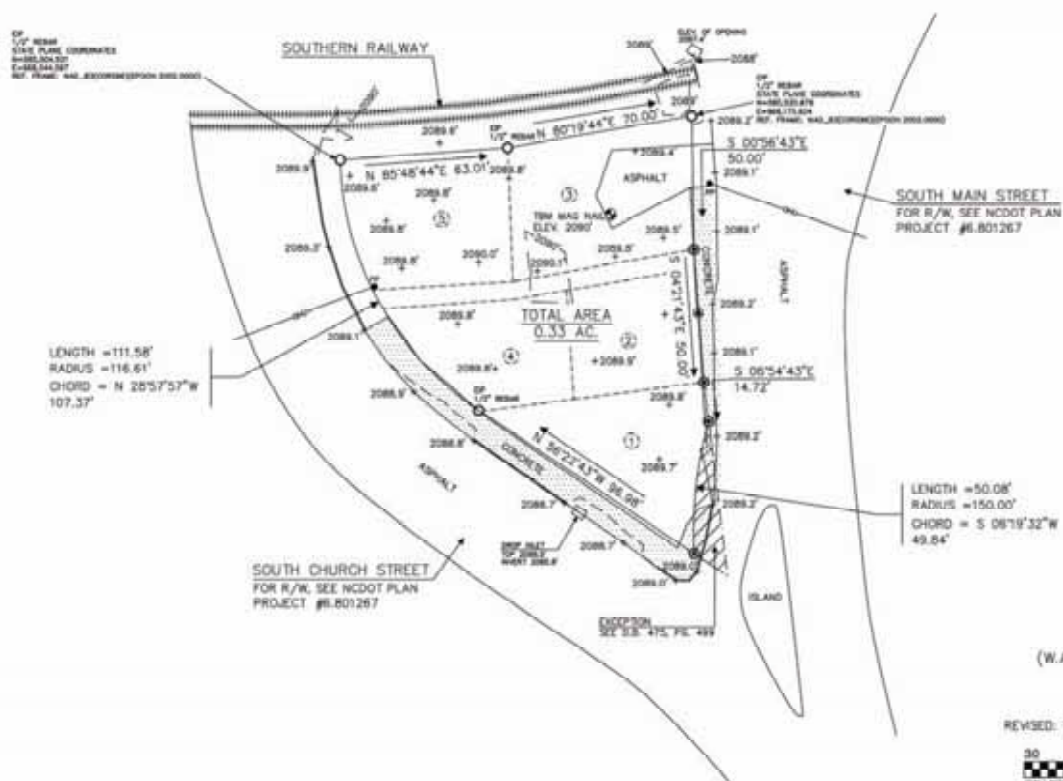
MARCH 4, 2010

Vicinity Map



MARCH 4, 2010

Site Survey



DEED REF:
D.B. 1357, PG. 559

PLAT REF:
CAB. B. SLIDE 72A
(W.A. SMITH & J.L. PACE SUBDIVISION)
TAX MAP #9568.12-85-0368

REVISED: TOPOGRAPHIC INFORMATION ADDED ON 02/02/19



NOT FOR RECORDATION



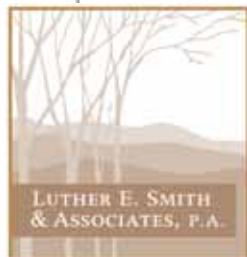
STATE OF NORTH CAROLINA
HENDERSON COUNTY
HENDERSONVILLE TOWNSHIP

D.B. 1357, PG. 559
TOPOGRAPHIC SURVEY FOR
THE CITY OF HENDERSONVILLE, NC

DAVID C. HUNTLEY & ASSOC.
LAND SURVEYING
875 MAPLE STREET
HENDERSONVILLE, NC 28792
(828) 983-8077

SURVEY DOH
DRAWN KMC
SCALE 1" = 30 FT.
DATE: 12/01/08
DWG. NO. H-5133T

I HEREBY CERTIFY THAT THE RATIO OF PRECISION
OF THE FIELD SURVEY IS 1:10,000 AS SHOWN
HEREON AND THAT THE AREA WAS DETERMINED
BY COORDINATE COMPUTATION



MARCH 4, 2010

Site Analysis



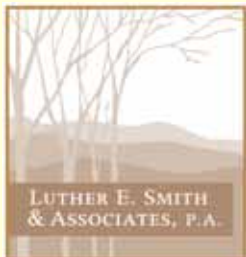
South East View



South West View



North East View



MARCH 4, 2010

Design Concept

GRANITE CURB STONES FOR TRAFFIC CALMING

KING STREET

FUTURE RAILS TO TRAILS GREENWAY

FUTURE EXTENSION OF THE FOREST

EVERGREEN TREES (TYP.)

BENCH (TYP.)

BOULDER (TYP.)

FLOWERS - GRASSES (TYP.)

RAIN GARDEN (TYP.)

"NO MOW" GRASS (TYP.)

CANOPY TREES (TYP.)

FLOWERING UNDERSTORY TREES (TYP.)

FLOWERS - GRASSES (TYP.)

CHURCH STREET

MAIN STREET

GRANITE CURB STONES

THE FOREST
MIX OF NATIVE VEGETATION

THE CULTURE
LOCAL ART IN THE FORM OF AN APPLE

THE MOUNTAIN
LANDFORM MOUND WITH NATURALLY PLACED BOULDERS

THE CITY
HISTORIC HENDERSONVILLE ENTRANCE SIGN

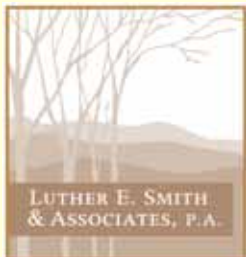
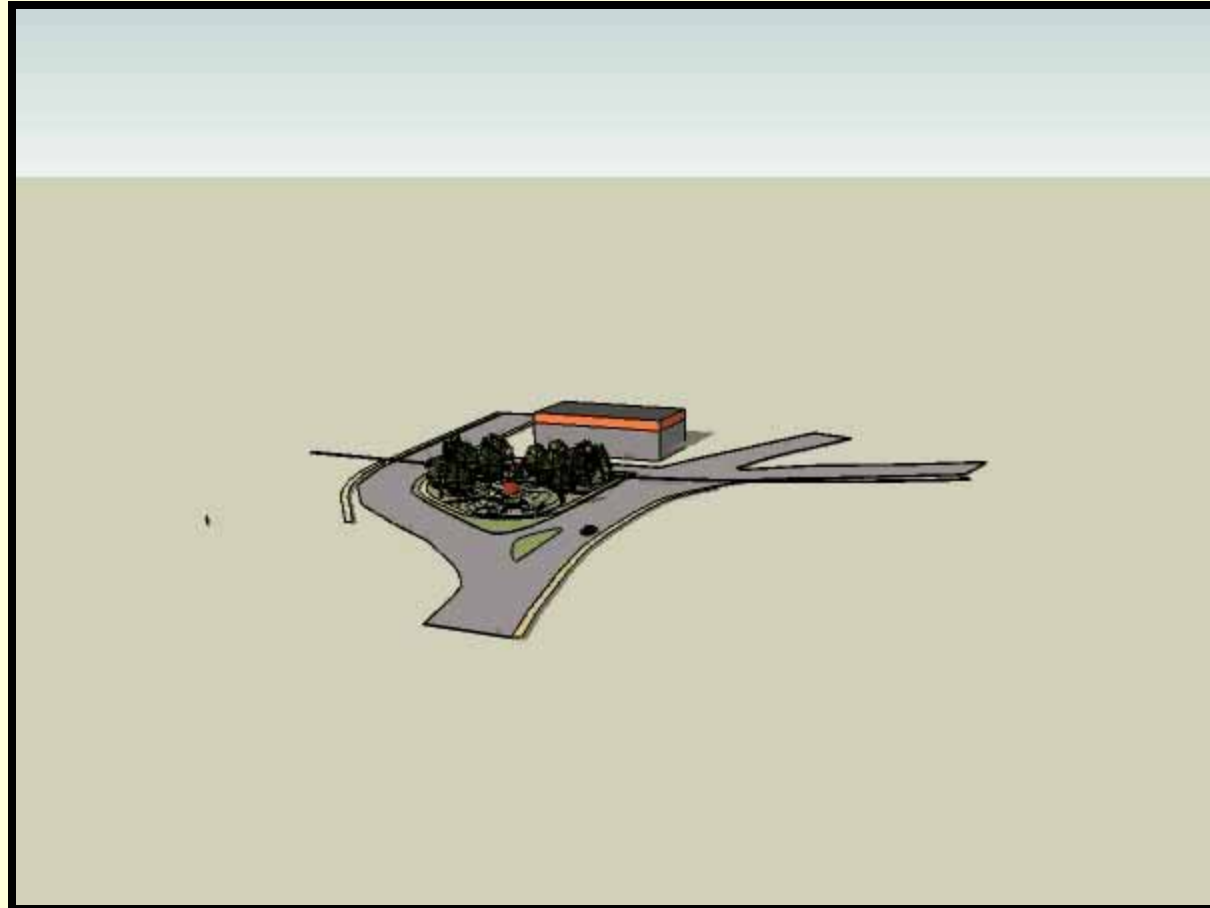
0 10 20 30 40 50 60 70 80 90 100

NORTH

To create a visual entrance feature to Historic Downtown Hendersonville from the south, With strong local and regional context playing up some of Hendersonville's more identifying elements; The City of Four Seasons, Apple Industry, The Mountains, The Arts, and the progression of the city in an abstract manner.



3-D Site Plan

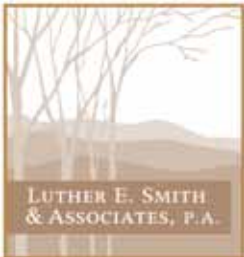


MARCH 4, 2010

North East View

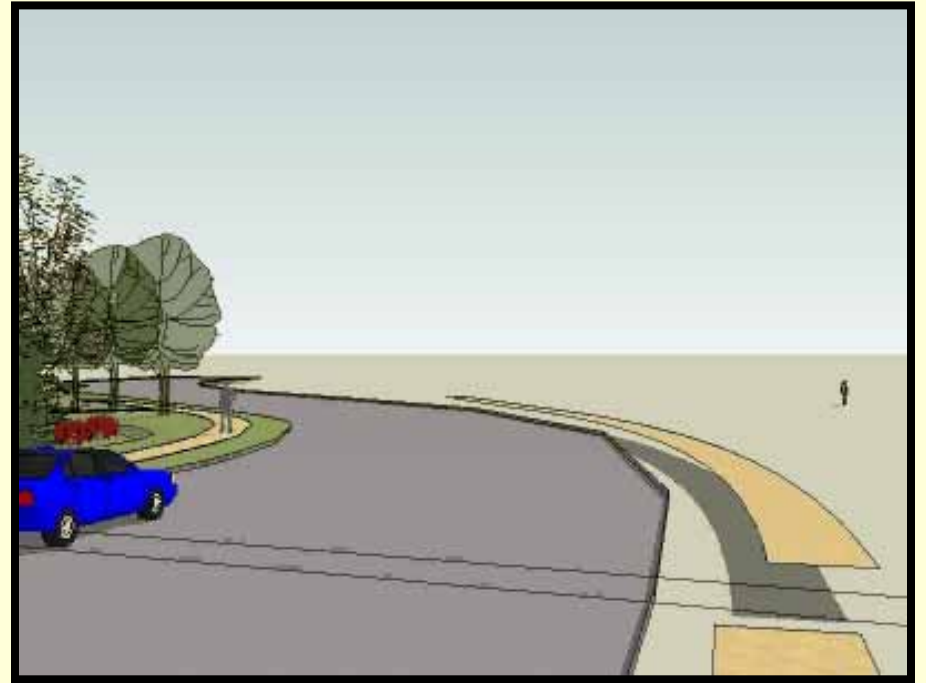


Traveling North on Greenville Hwy.

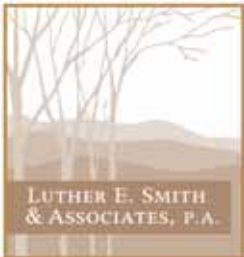


MARCH 4, 2010

South East View

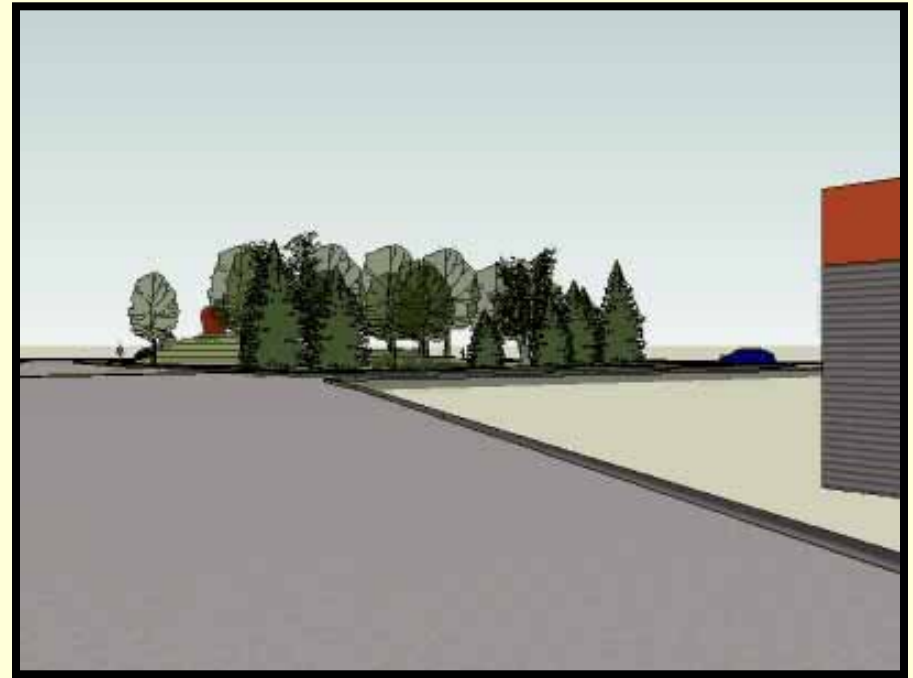


Traveling South on Church Street

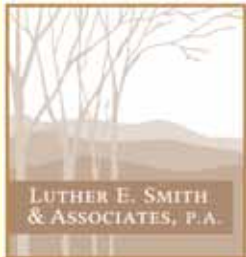


MARCH 4, 2010

South West View



Traveling South on S. Main Street



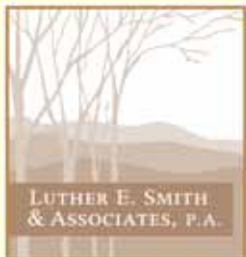
MARCH 4, 2010

The City

Historic Hendersonville Entrance Sign

The City

The progression of the city will be demonstrated in the entrance sign. This proposed sign is to be made of granite with the DHI logo lettering; the large H will be made of copper and the other lettering in black metal. The sign will be flanked on both sides with large natural boulders than working its way to rough cut granite stones similar to those found on the old foundations seen throughout downtown, than blending to a finely cut granite stone in the center; showing the progression - refinement of the city throughout its rich history and into the future.



MARCH 4, 2010

The Mountains

Landform Mound With Naturally Placed Boulders

The Mountains

The mountains will be symbolized by an undulating mound in the center of the site with several naturally placed outcrops of large boulders that abstractly mimic the mountains in this region. The rolling form will be planted with a no-mow grass mix and native vegetation with four seasons of interest. This feature will have the entrance sign set into it and will also give height to the site for character and visibility.



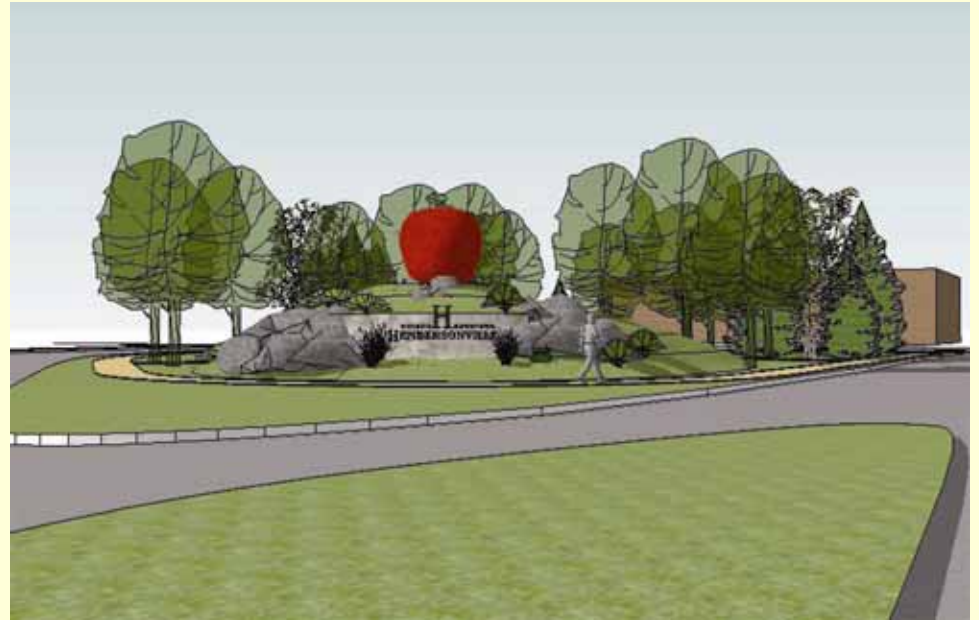
MARCH 4, 2010

The Culture

Art in the Form of an Apple

The Culture

On top of the mountain will be an abstract public art sculpture of an apple commissioned by a local artist. This will pay homage to the counties history of the apple industry and the farmers who made it thrive. The sculpture and the entrance sign will also show this area history of craftsmanship and art.



The Forest

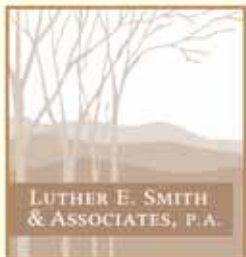
Mix of Native Vegetation

The Forest

Native canopy and conifer trees will be planted with an understory of local flowering trees and shrubs to the rear of the site, adjacent to the proposed future rails to trails greenway. Plantings will showcase the unmatched beauty of our local forests and again play up The City of Four Seasons through the plants ever changing colors and character..

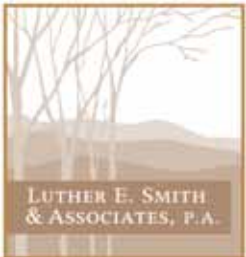
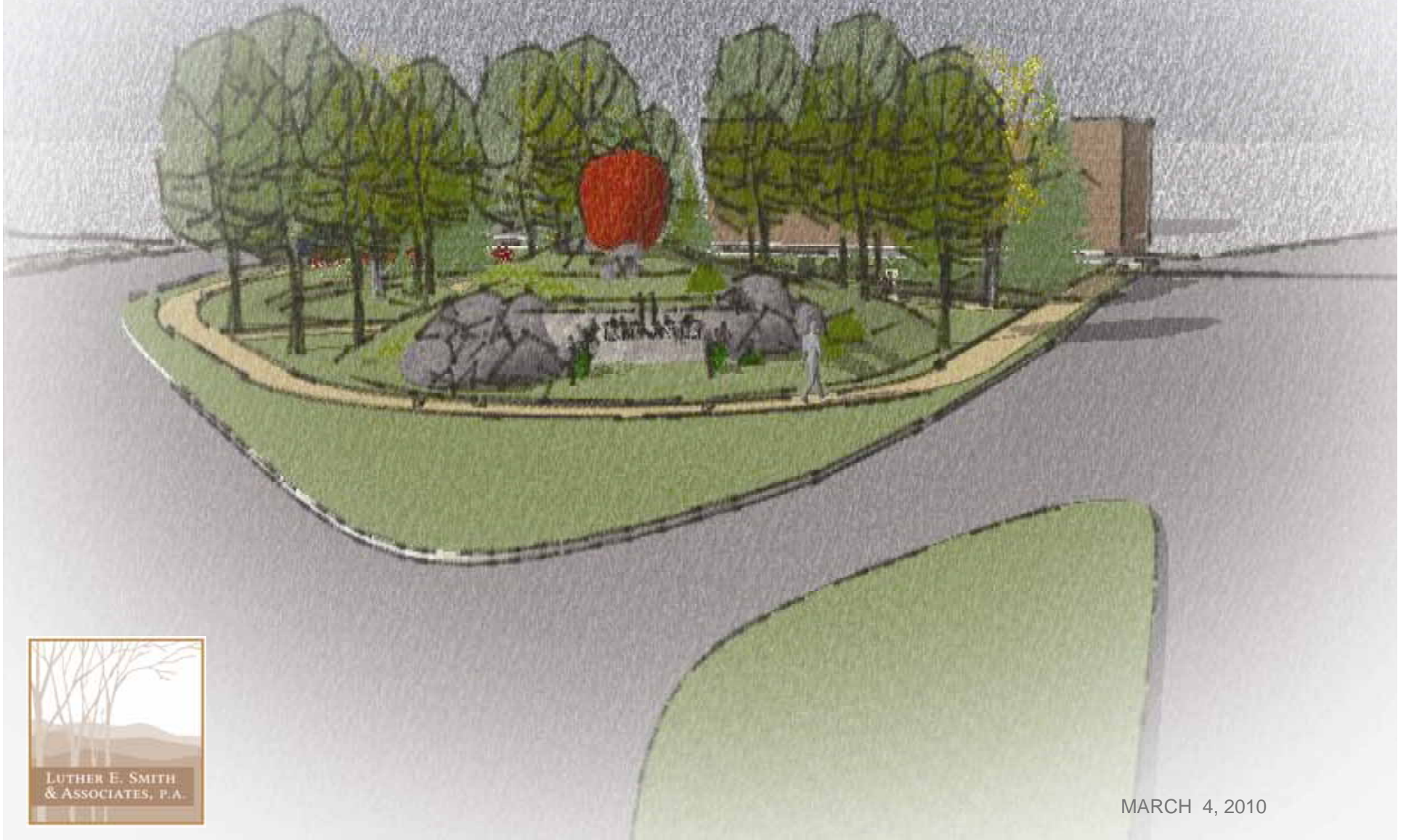


MARCH 4, 2010



MARCH 4, 2010

Southside Gateway Park



MARCH 4, 2010