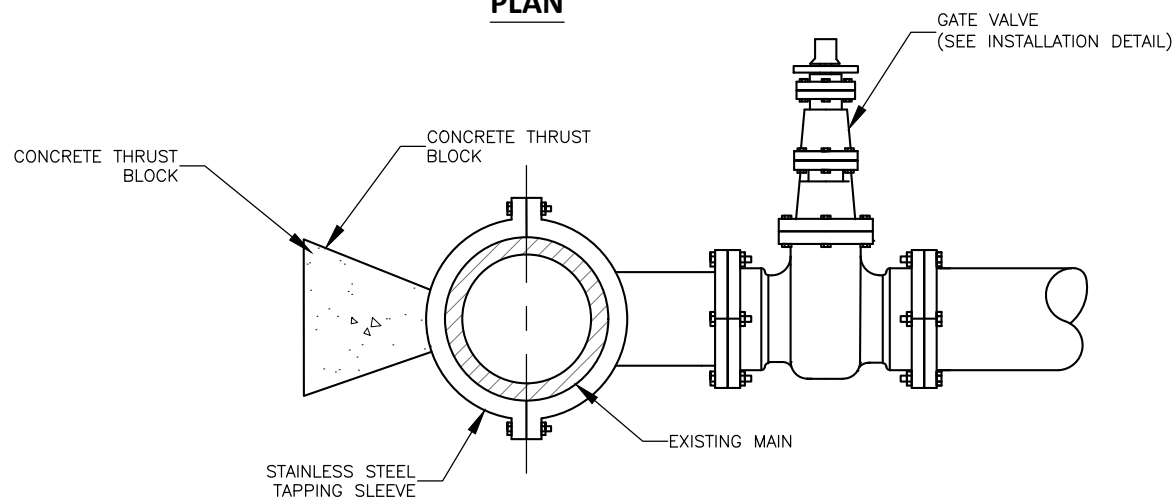


PLAN



PROFILE

NOTE:

1. CONCRETE SHALL BE 3000 PSI.
2. CONCRETE SHALL NOT CONTACT BOLTS OR ENDS OF MECHANICAL JOINT FITTINGS BY THE INSTALLATION OF POLYETHYLENE FILM PLACED BETWEEN THE FITTINGS AND POURED CONCRETE.
3. ENGINEER TO SIZE THE CONCRETE THRUST BLOCK BASED ON THE WATER MAIN SIZE AND SITE SPECIFIC SOIL-BEARING CAPACITY.
4. TAPPING SLEEVES SHALL BE INSTALLED PER MANUFACTURERS SPECIFICATIONS.
5. SAME DIAMETER TAPS ARE NOT PERMITTED. IF THE MAINS ARE THE SAME DIAMETER THE CONTRACTOR SHALL INSTALL A TEE WITH RESTRAINED JOINTS..
6. CONTRACTOR SHALL SET THE TAPPING SLEEVE. CITY OF HENDERSONVILLE WATER AND SEWER DEPARTMENT SHALL PERFORM THE TAP.

DATE: 07/14/2025

WD DWG. NO. 05

SCALE: NOT TO SCALE

City of Hendersonville Engineering Department
305 Williams Street
Hendersonville, NC 28792
(828) 697-3000 (office)

www.cityofhendersonville.org

TAPPING SLEEVE AND VALVE ASSEMBLY

