



# Hendersonville Community Engagement

Whitmire Center

Patton Park & Pool

July 15<sup>th</sup>, 2025



# Introduction



WithersRavenel  
Our People. Your Success.



# We want your feedback!

- **Index cards- overall comments**

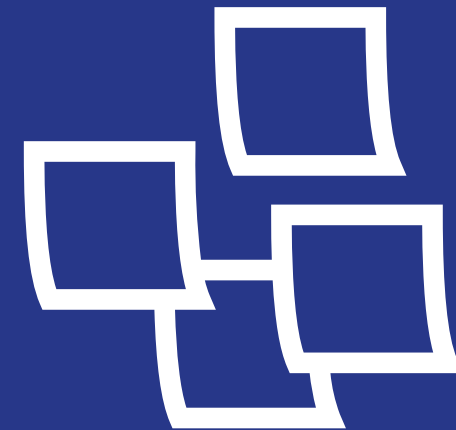
Suggestions:

Favorite features

Likes/ dislikes

- **Boards**

One dot per person- choose your favorite design option

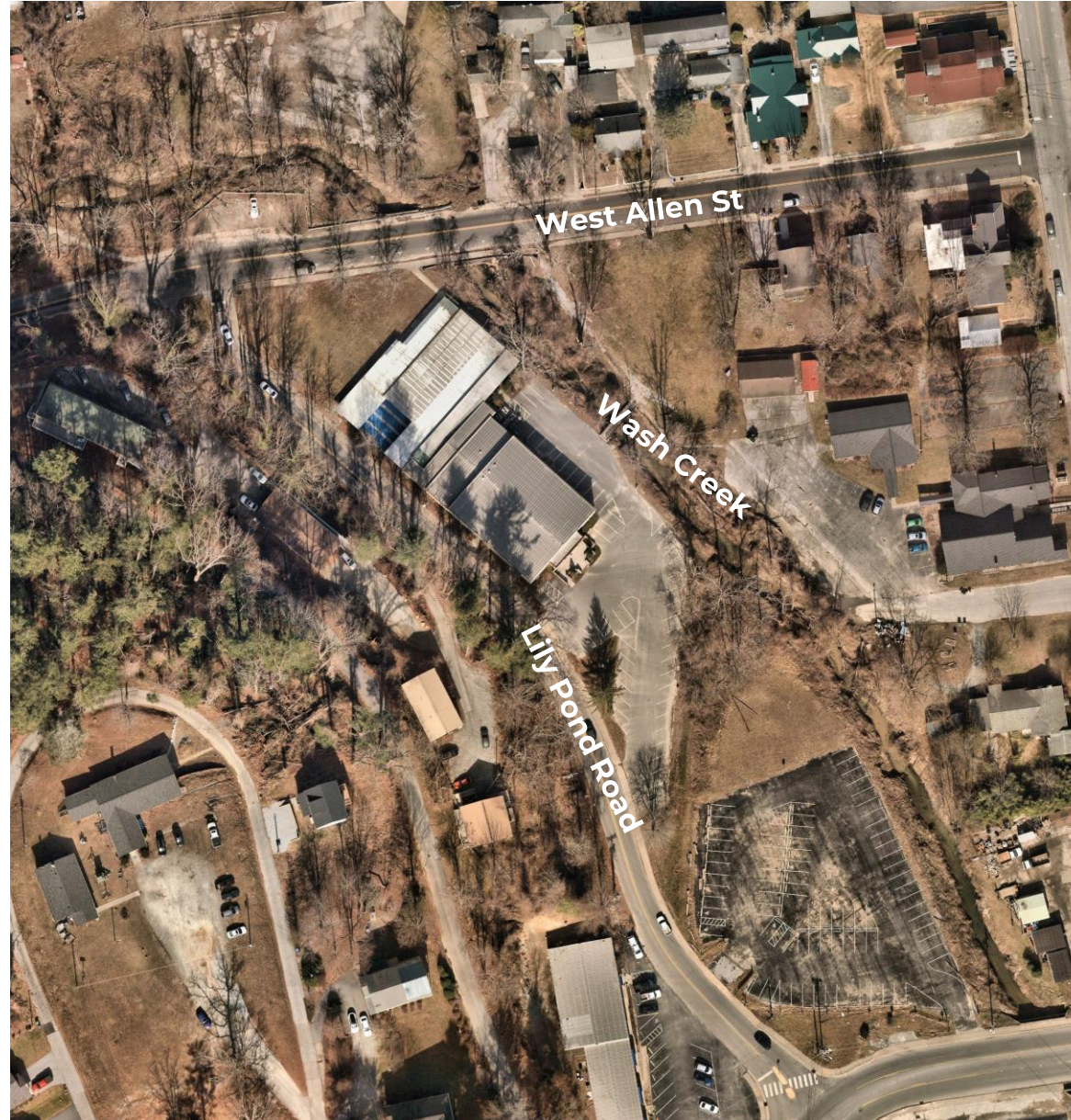


# How did we get here?



# Whitmire Activity Center with Toms Park Existing Conditions

- 2.5 Acres
- 50 parking spots
- 14 Shuffleboard Courts
- 3200 sf large Flex Space
- 8250 sf overall footprint
- Park trails







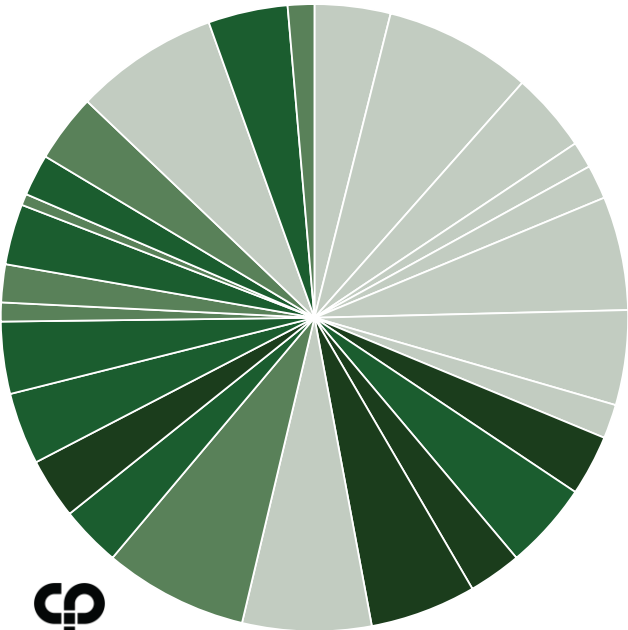
# Patton Park Existing Conditions

- 18 Acres
- 145 Parking Spots
- 47,000 sf Pool Facilities (~7,000 sf Support Buildings)
- 50-meter 8 Lane Outdoor Pool with Diving Board
- Outdoor Kiddie Pool
- Playground
- 1 Tennis Court
- 4 Pickleball Courts
- Baseball Field
- Skate Park
- Basketball Court
- Open Field Area



# Park Spaces

-  Nature/ Restoration 44%
-  Exercise 16%
-  Multi-Use 20%
-  Education/ Culture 14%



# Park Feedback

## Stakeholders

- Walking Trails
- Playgrounds
- Skate Park
- Bathrooms
- Pickleball
- Bocce
- Basketball or Parkour/Ninja Warrior Park
- Pump Track

## Community Engagement

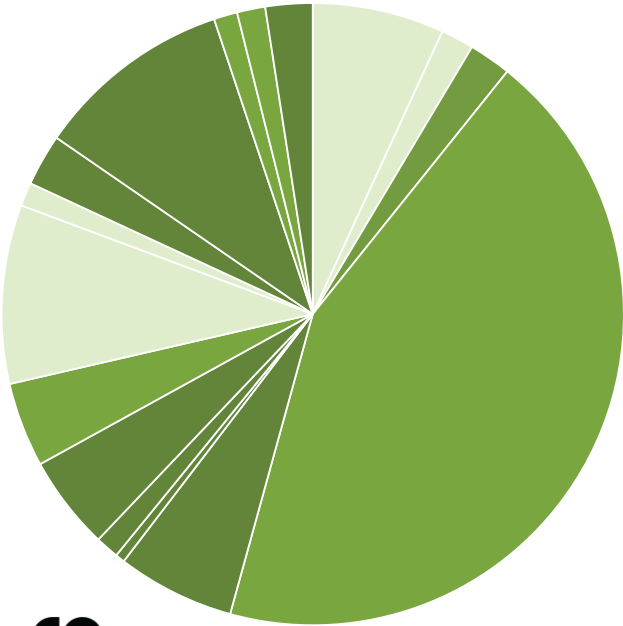
- Interaction with Nature
- Restoration/Sustainability
- Constructed Wetlands
- Stream Restoration
- Walking Trails

## Online Survey

- Playground Areas
- Walking & Biking Trails
- Community space & Multigenerational areas
- Picnic Areas
- Pickleball/Tennis
- Yard Games
- Skate Park
- BMX/Pump Track

# Community Spaces

- Meeting Spaces 52%
- Intergenerational Activities 27%
- Flexible Zones 19%



# Community Feedback

## Stakeholders

- Intergenerational
- Accessibility
- Multi-Use Spaces
- Event Spaces
- Volleyball

## Community Engagement

- Multi-Purpose Rooms
- Flexible Recreation Areas
- Intergenerational
- Classrooms
- Intergenerational

## Online Survey

- Large meeting spaces
- Rentable areas
- Natural light
- Low cost
- Indoor activities
- Games
- Sports
- Educational classes
- Community events

# Aquatic Spaces

- Exercise 37%
- Intergenerational 29%
- Accessible 19%
- Shade 15%



WithersRavenel  
Our People. Your Success.

# Feedback

## Stakeholders

- 50 Meter Pool
- Teams
- Competition
- Lessons
- Lap swim
- Camps
- Open swim/  
creative play
- Diving

## Community Engagement

- Lap Lanes
- Splash Pad
- Swim Lessons
- Zero Depth Entry
- Shallow Play Area
- Slide
- Lazy River/  
Current Channel
- Water Aerobic Area

## Online Survey

- Zero Depth Entry
- Lazy River/  
Current Channel
- Splash Deck
- Swim Lessons
- Shallow Depth Play Area
- Lap Lanes
- Slide
- Water Aerobics

# Design Options

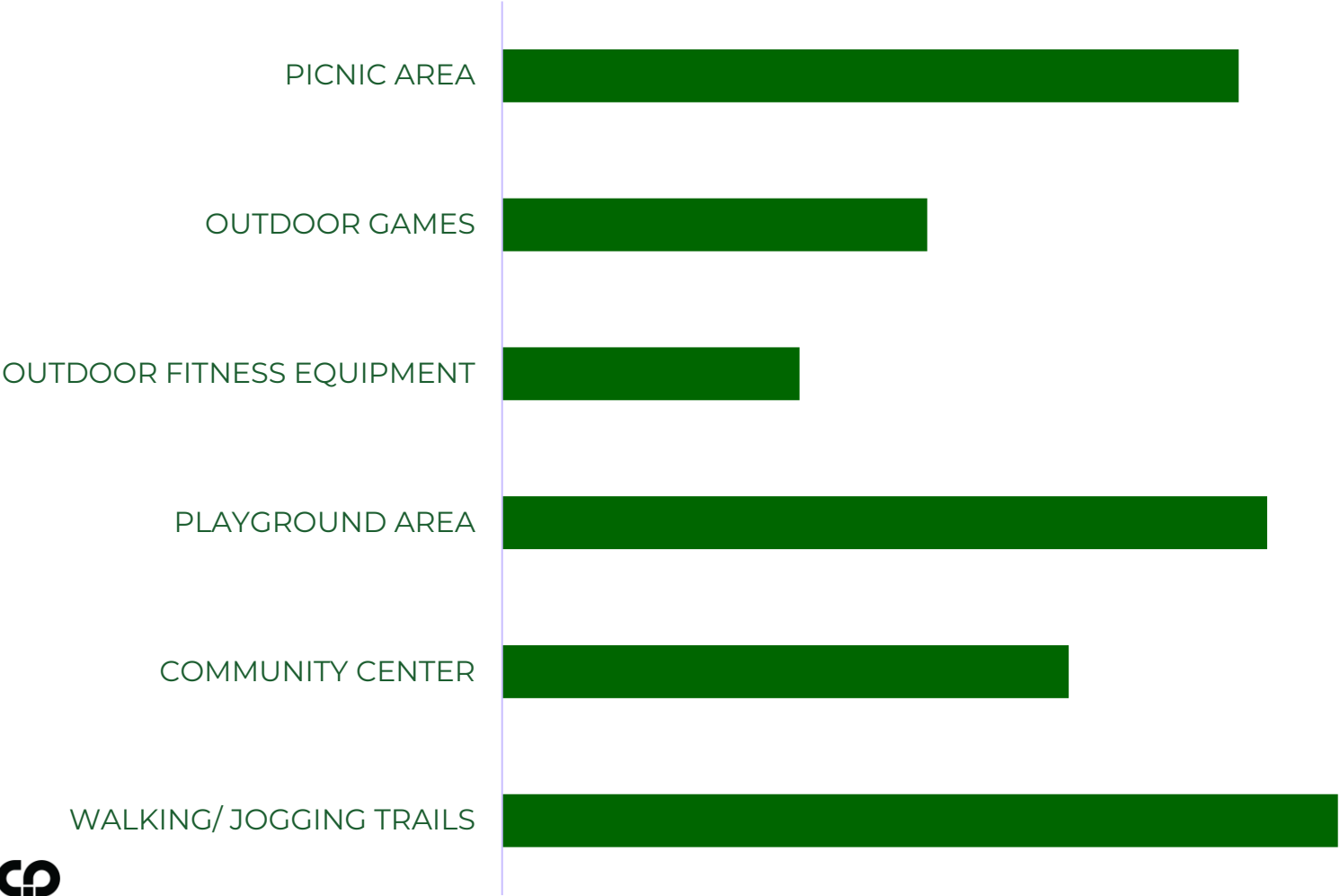
- **1A- Base Whitmire** **12,800 SF**  
Base Community Center, Trail Restrooms
- **1B- Whitmire Park Support** **800 SF**  
Trail Restrooms
- **2A- Patton Park Base** **72,600 SF**  
50 Meter Indoor Pool, Indoor Warm Water Wellness Pool, Trail Restrooms
- **2B- Patton Park & Community** **82,300 SF**  
Outdoor Recreational Aquatics, Indoor 25 Yard Pool with Warm Water Wellness Pool, Dream Community Center, Trail Restrooms

# 1A- Whitmire Base



# What activities should be prioritized at Toms Park?

## TOMS PARK ACTIVITIES



# 1A-Programs



**PLAYGROUND**



**COMMUNITY  
CENTER**



**WALKING/  
JOGGING  
TRAILS**



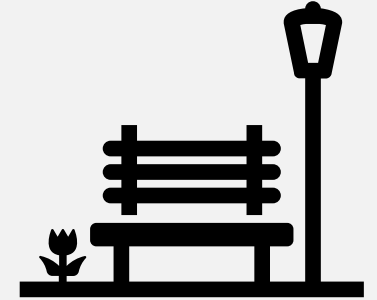
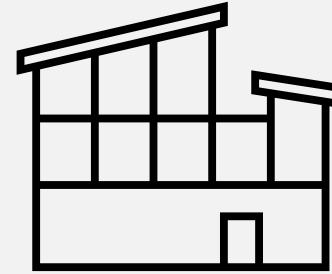
**PICNIC AREA**



**OUTDOOR  
GAMES**

# 1A Program

- **12,000 SF Community Space**
  - Medium flex recreation space
  - Warming kitchen
- **800 SF Trail Restrooms**
- **Playground**
- **Flex Lawn**
- **Stream Restoration**
- **Slough**



# 1A- Site Layout



PLAYGROUND



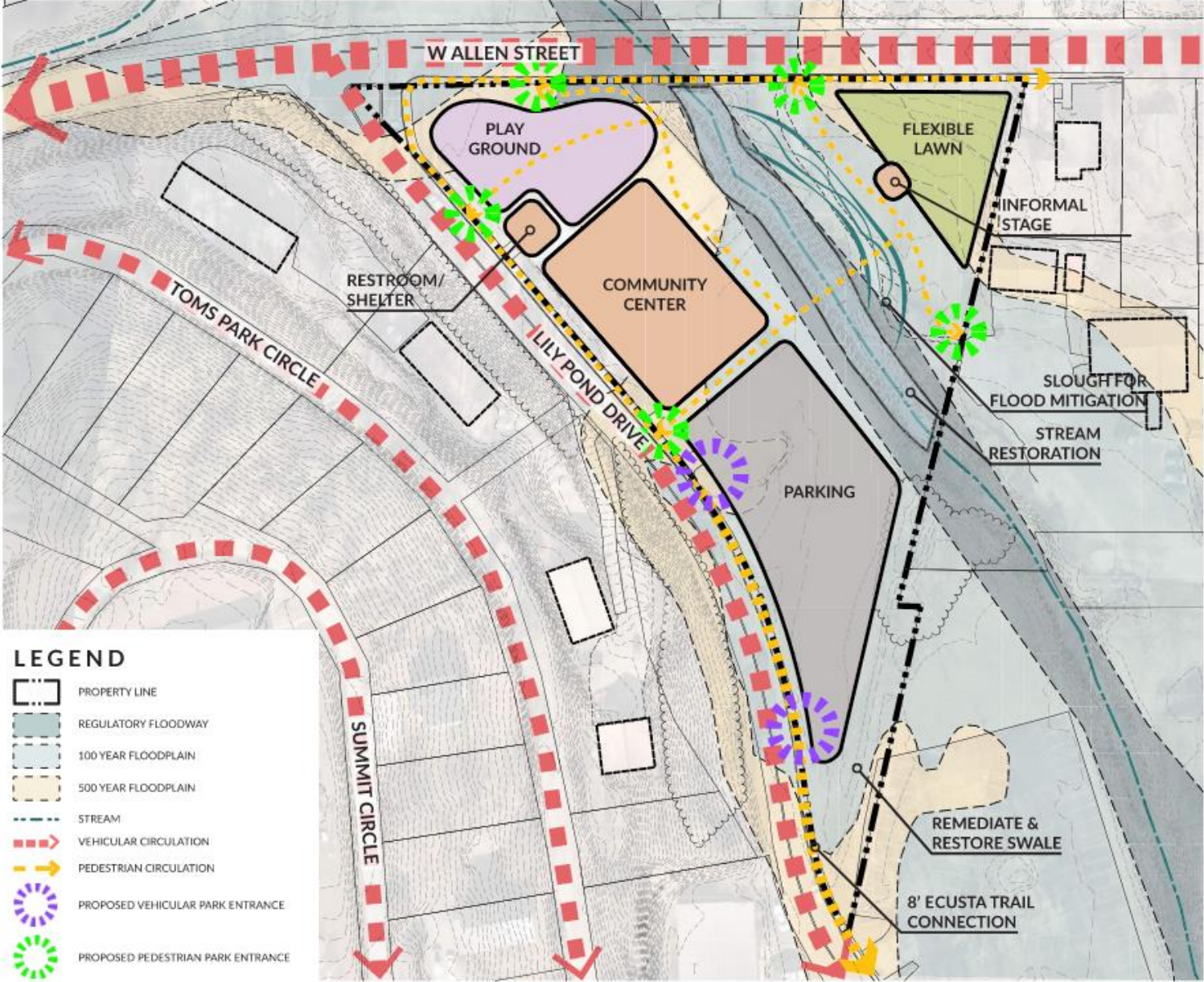
FLEX LAWN



STREAM RESTORATION

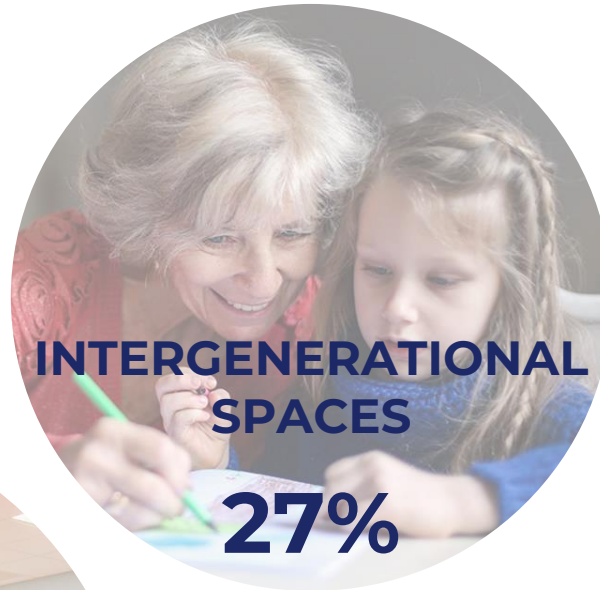


SLOUGH

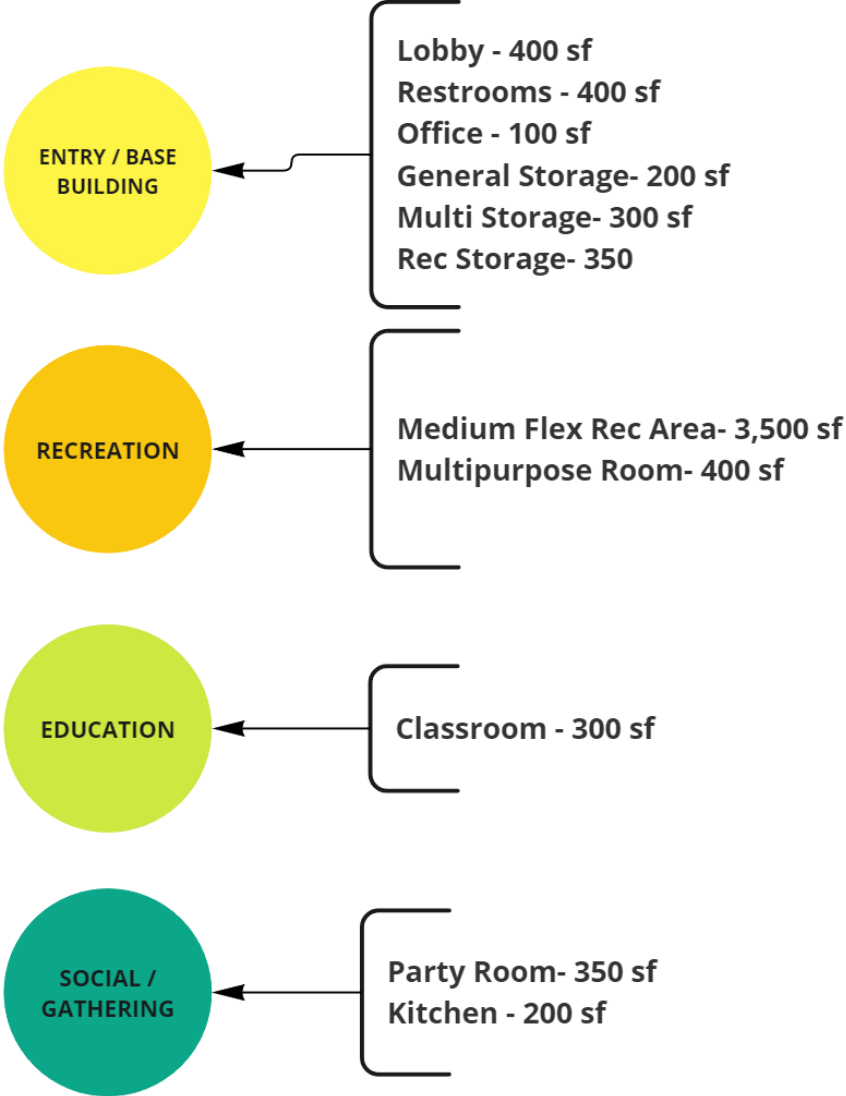
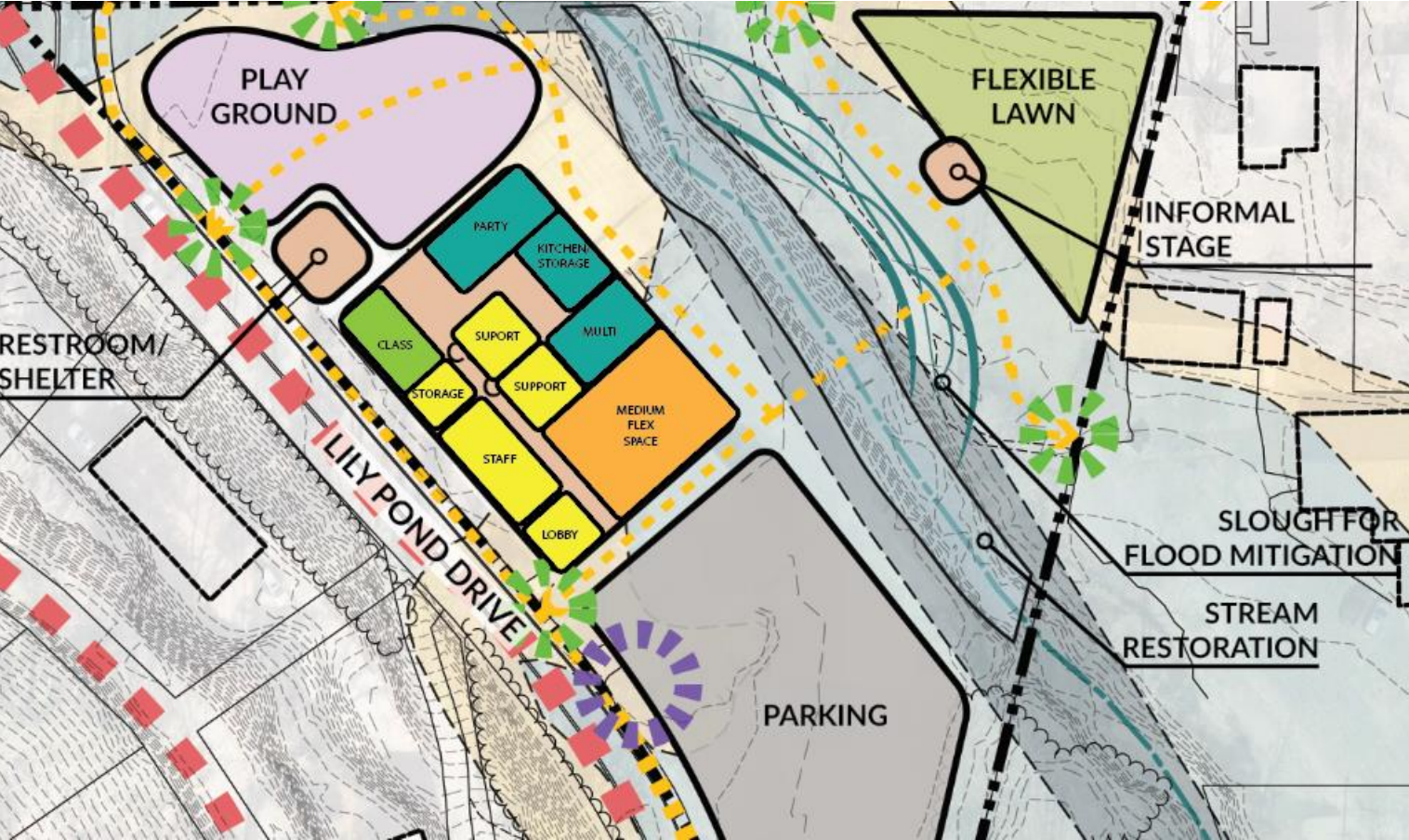


# 1A- Community Programs

PERCENTAGES OF PROGRAM REQUESTS  
FROM COMMUNITY ENGAGEMENT



# 1A- Building Program

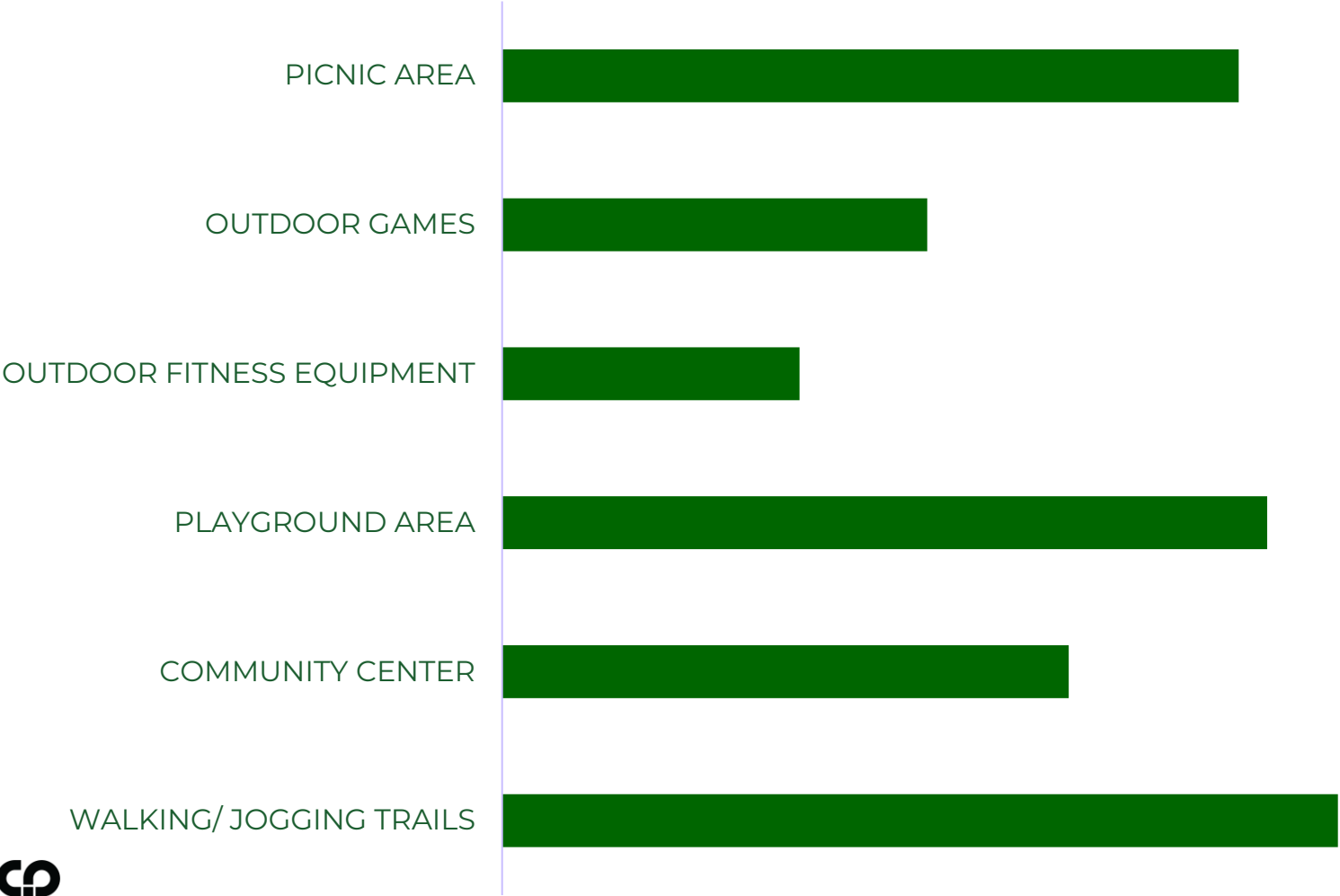


# 1B- Whitmire Park Support



# What activities should be prioritized at Toms Park?

## TOMS PARK ACTIVITIES

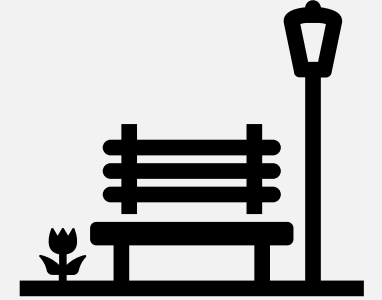


# 1B-Programs



# 1B Program & Preliminary Estimate

- 800 SF Trail Restrooms
- Playground
- Flexible Lawn
- Picnic Area
- Constructed Wetland
- Shuffleboard



# 1B- Site Layout



NATURE PLAY



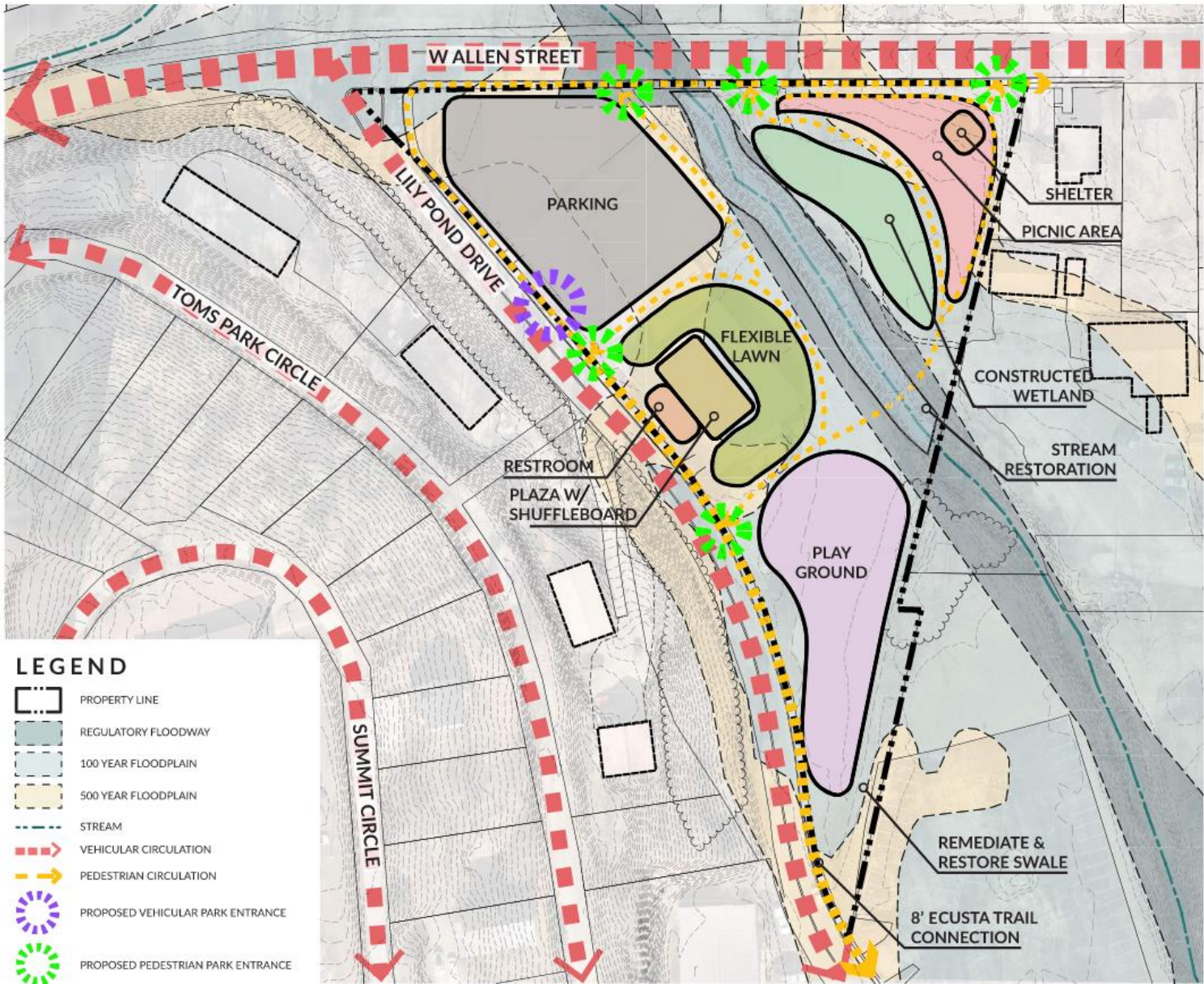
FLEX LAWN



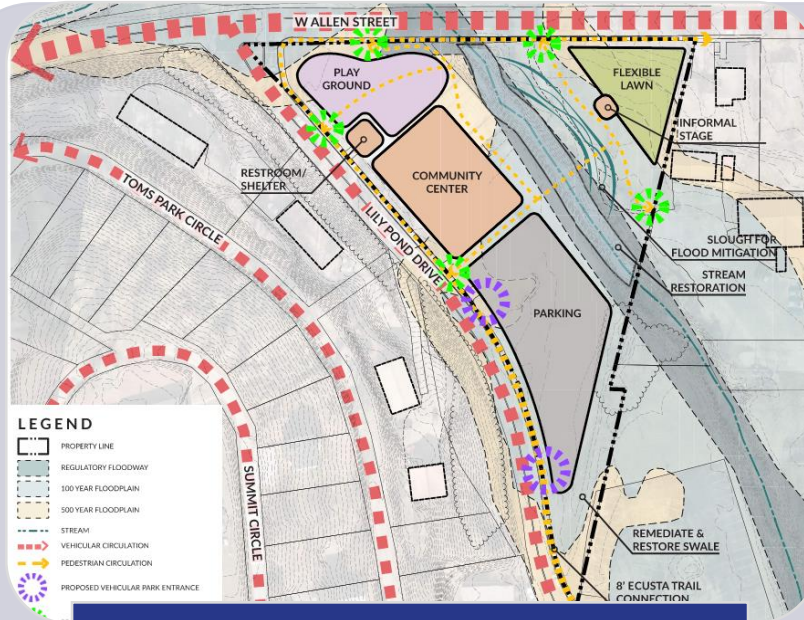
STREAM RESTORATION



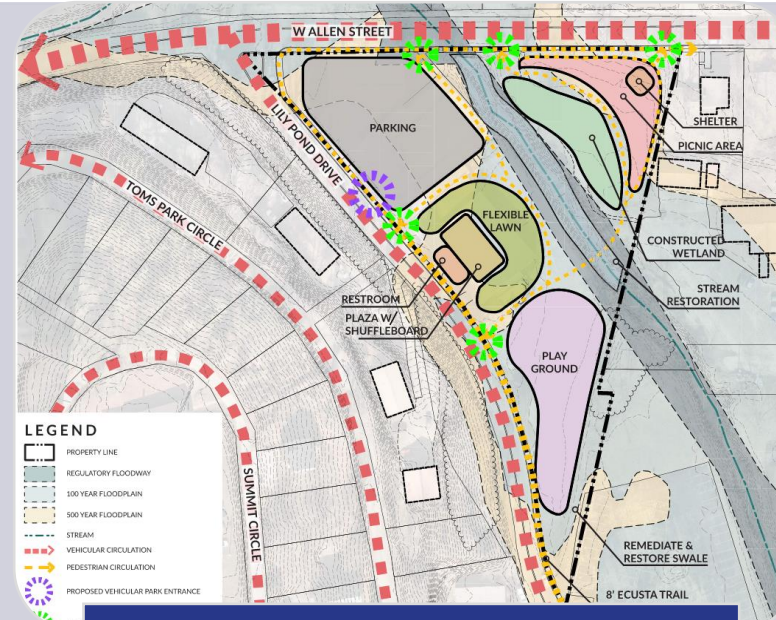
CONSTRUCTED WETLAND



# Whitmire1A vs. 1B



**Community Center**  
**Trail Restrooms**  
**Playground**  
**Flex Lawn**  
**Stream Restoration**  
**Slough**



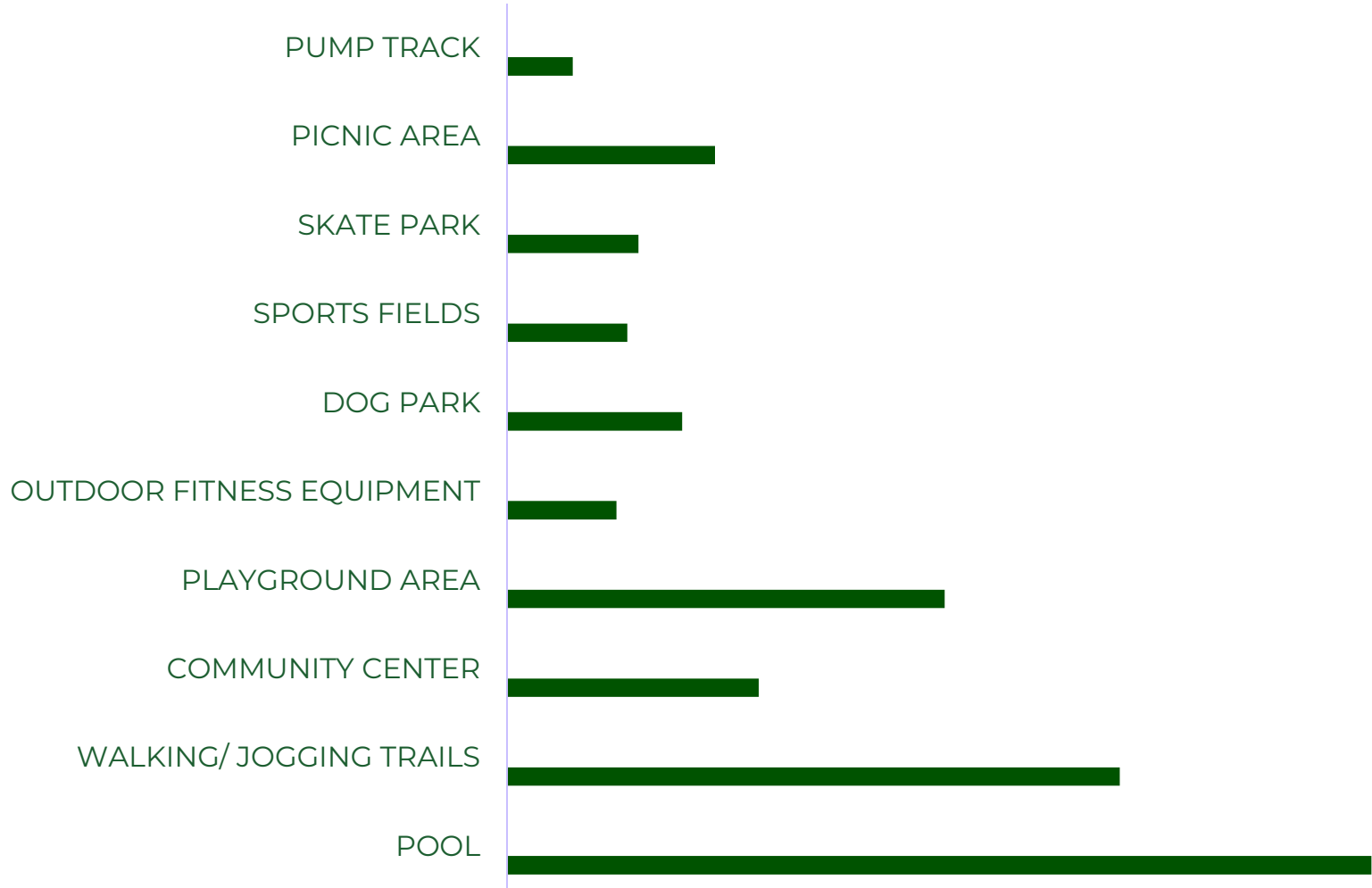
**Trail Restrooms**  
**Playground**  
**Flexible Lawn**  
**Picnic Area**  
**Constructed Wetland**  
**Shuffleboard**

# 2A- Patton Park Base



# What activities should be prioritized at Patton Park?

## PATTON PARK ACTIVITIES

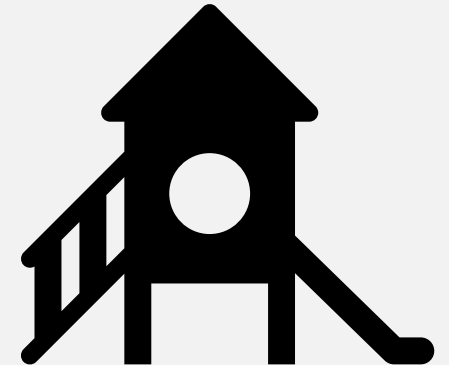
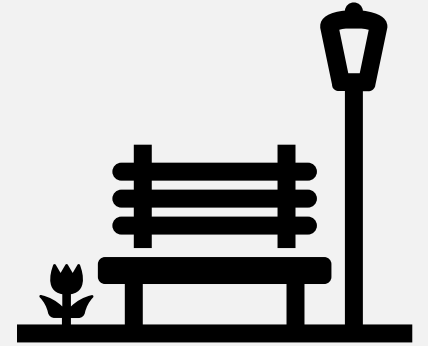


# 2A-Programs

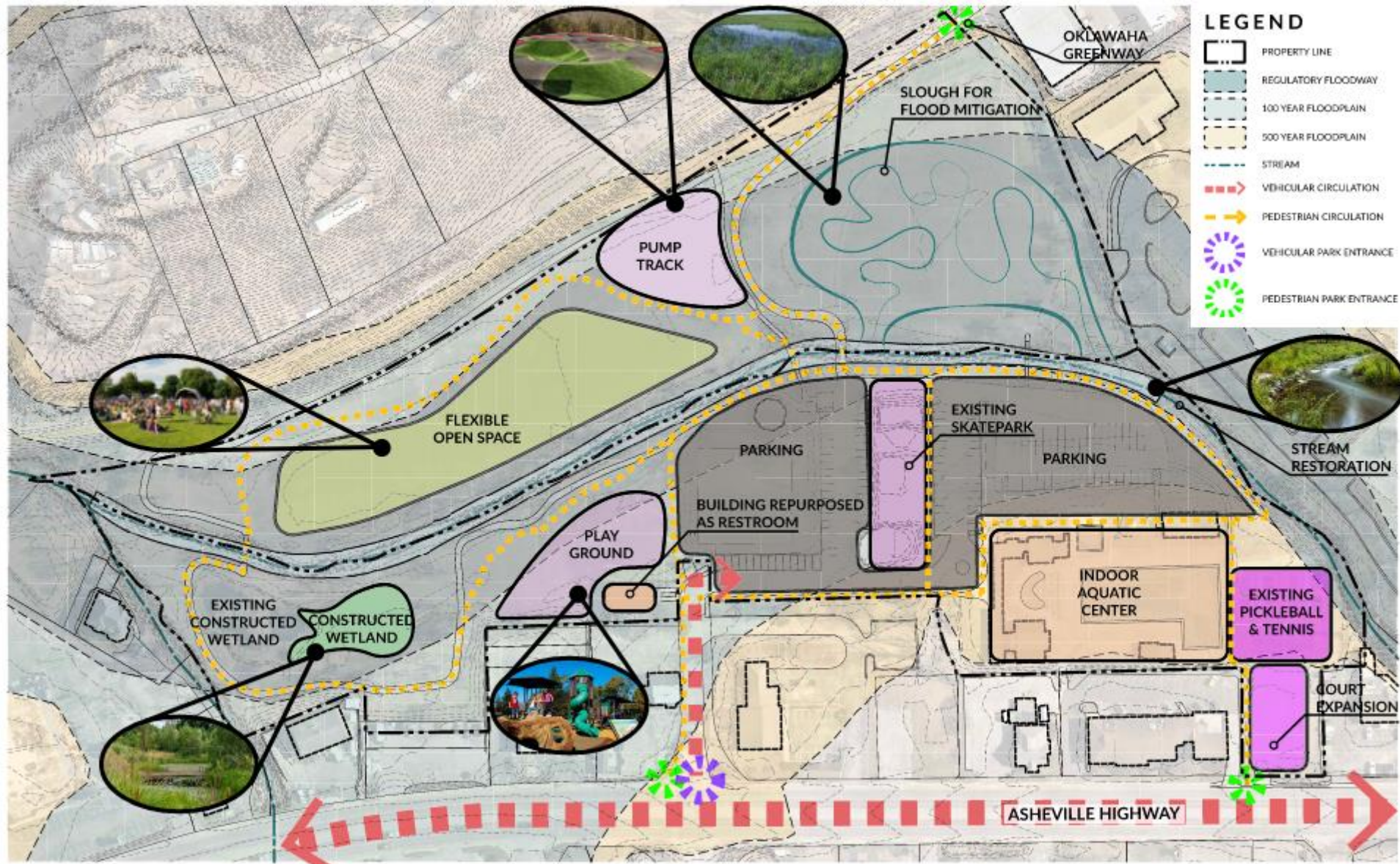


# 2A Program

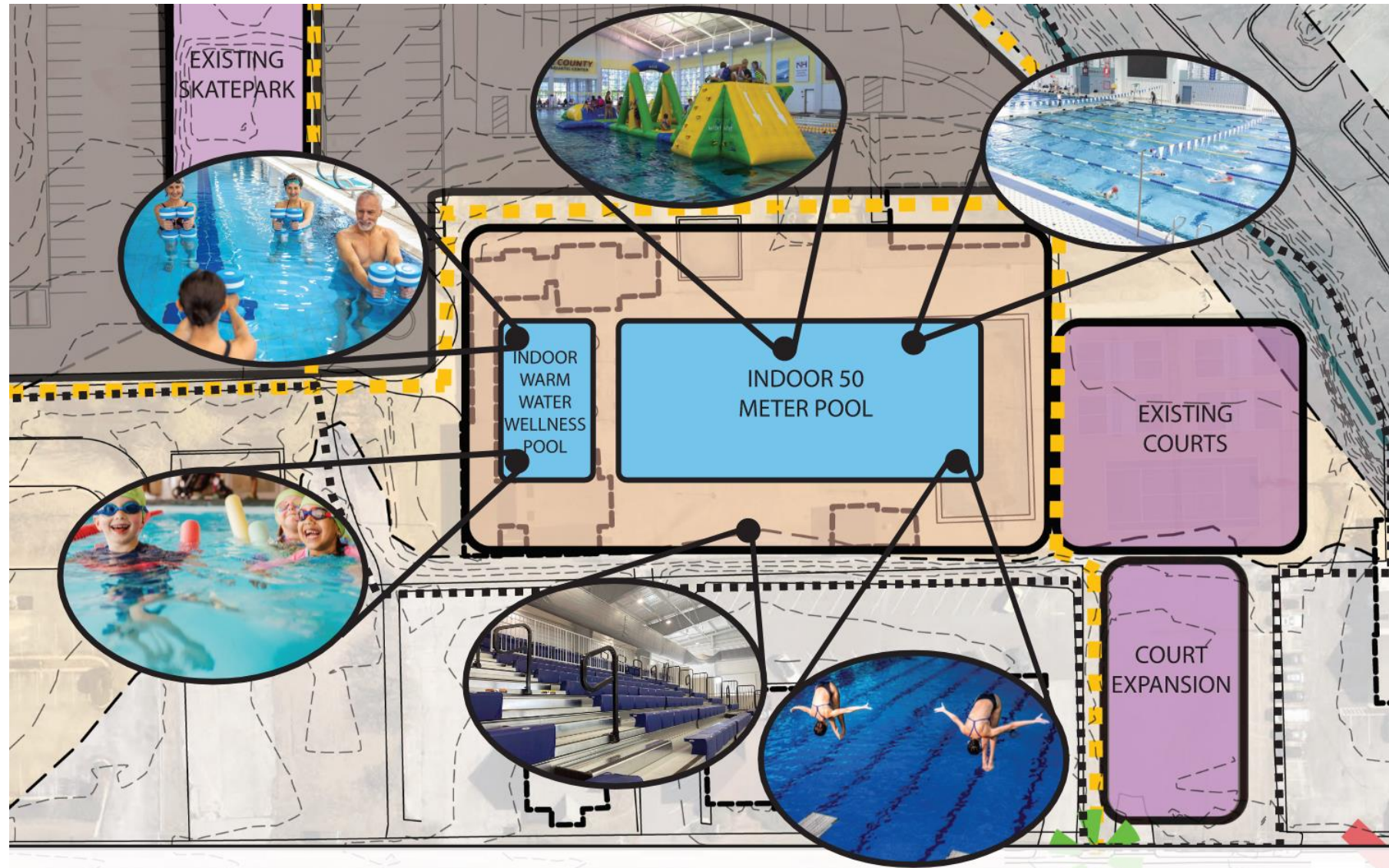
- **71,800 SF Indoor Aquatics**
  - 50 Meter Pool
  - 5 Lane Warm Water Wellness Pool
  - Event Space
  - Concessions
- **Pump Track**
- **Flexible Recreation**
- **Playground**
- **Stream Restoration**
- **Constructed Wetland**
- **Slough**
- **800 SF Trail Restrooms**



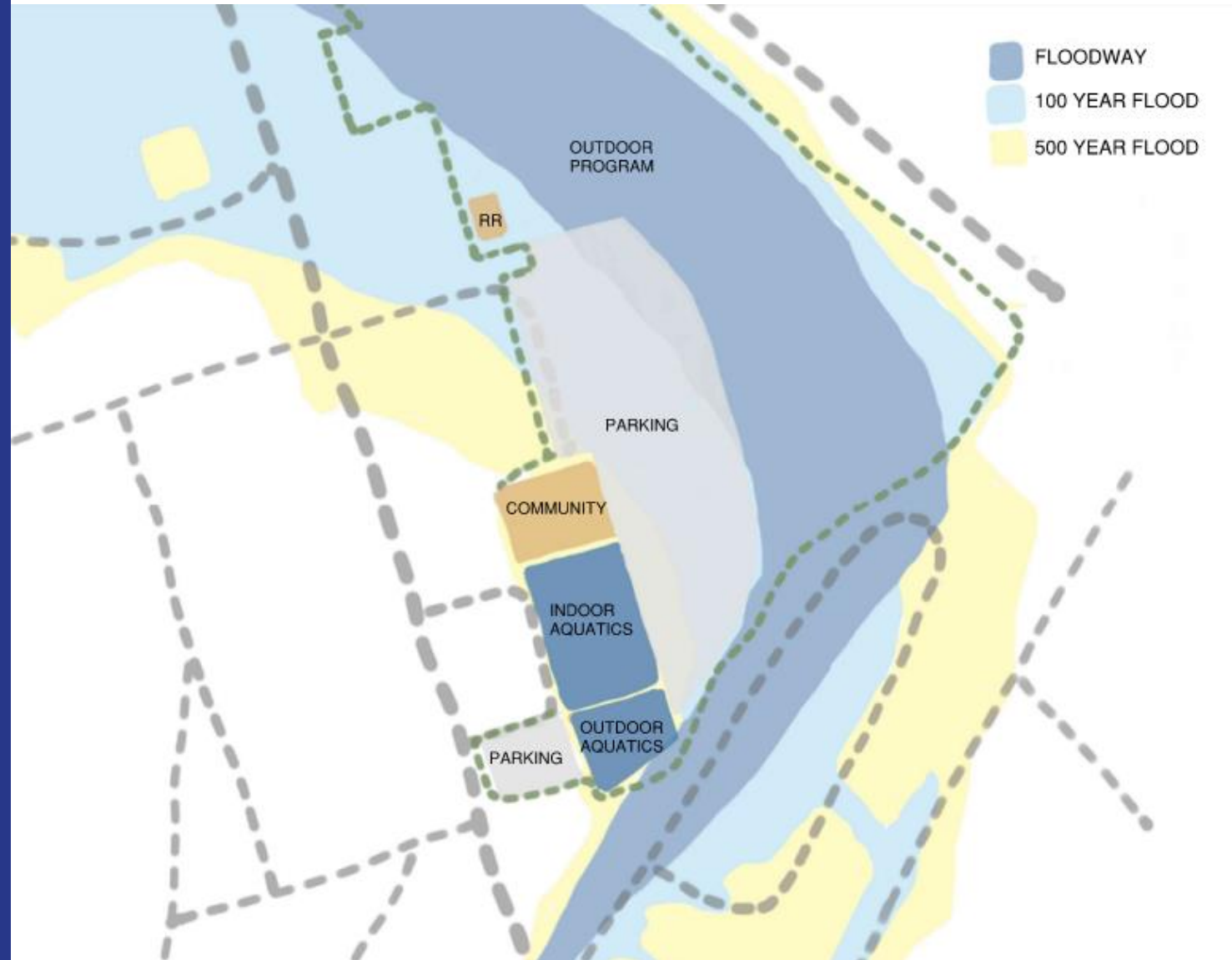
## 2A- Site Layout



## 2A- Aquatics

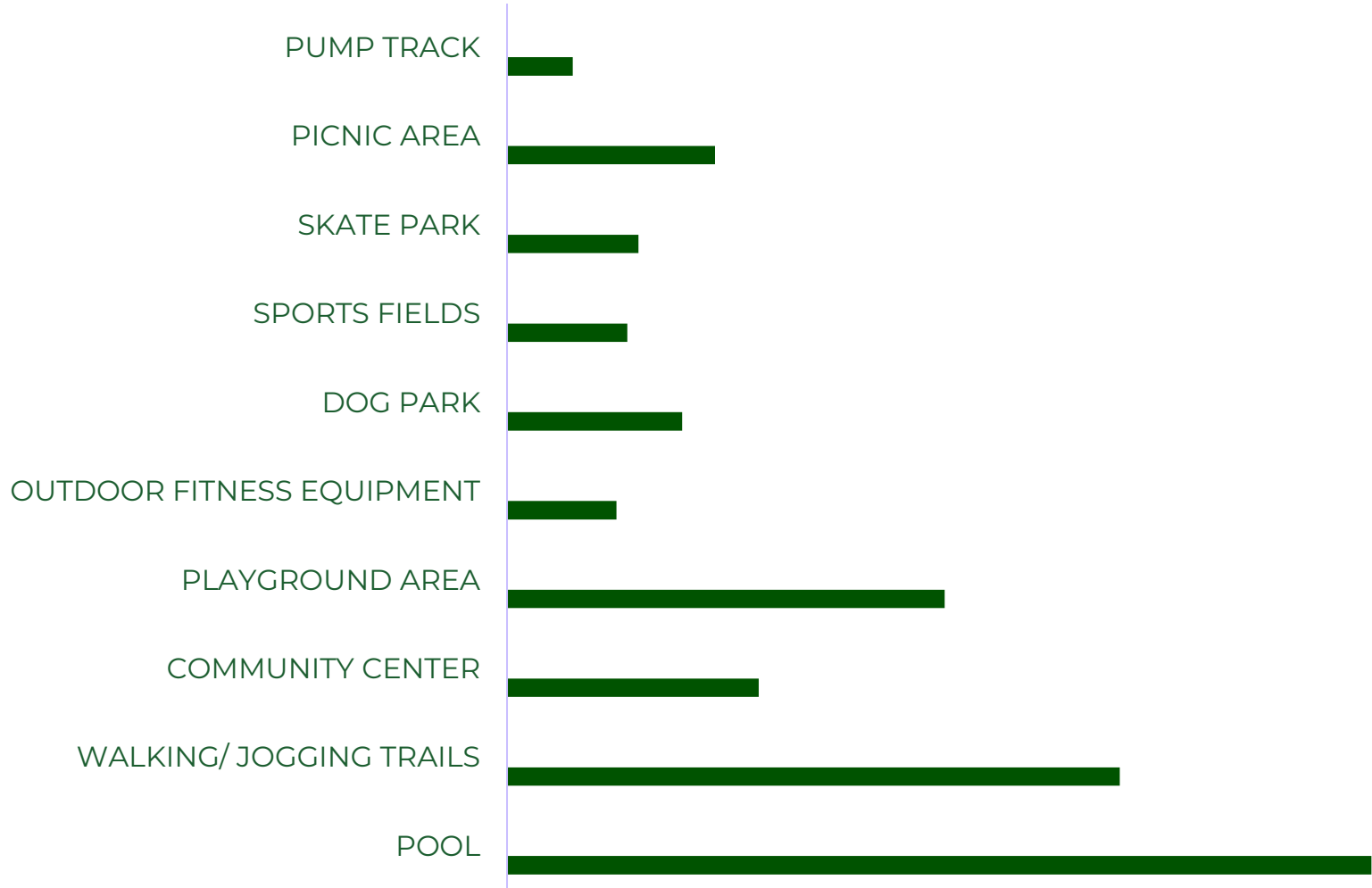


# 2B- Patton Park & Community



# What activities should be prioritized at Patton Park?

## PATTON PARK ACTIVITIES



# 2B-Programs



**PICNIC AREA**



**PLAYGROUND**



**COMMUNITY CENTER**



**SPORTS FIELDS**



**PUMP TRACK**



**WALKING/  
JOGGING  
TRAILS**



**SKATE PARK**



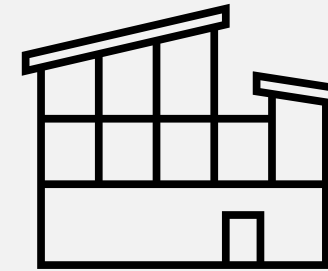
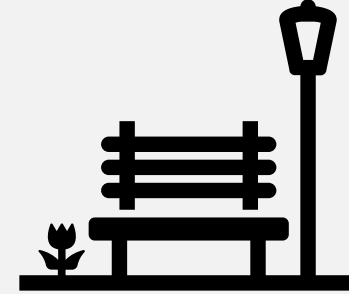
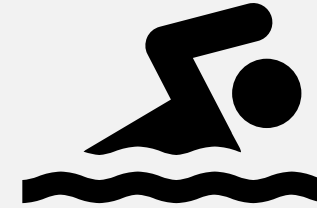
**POOL**



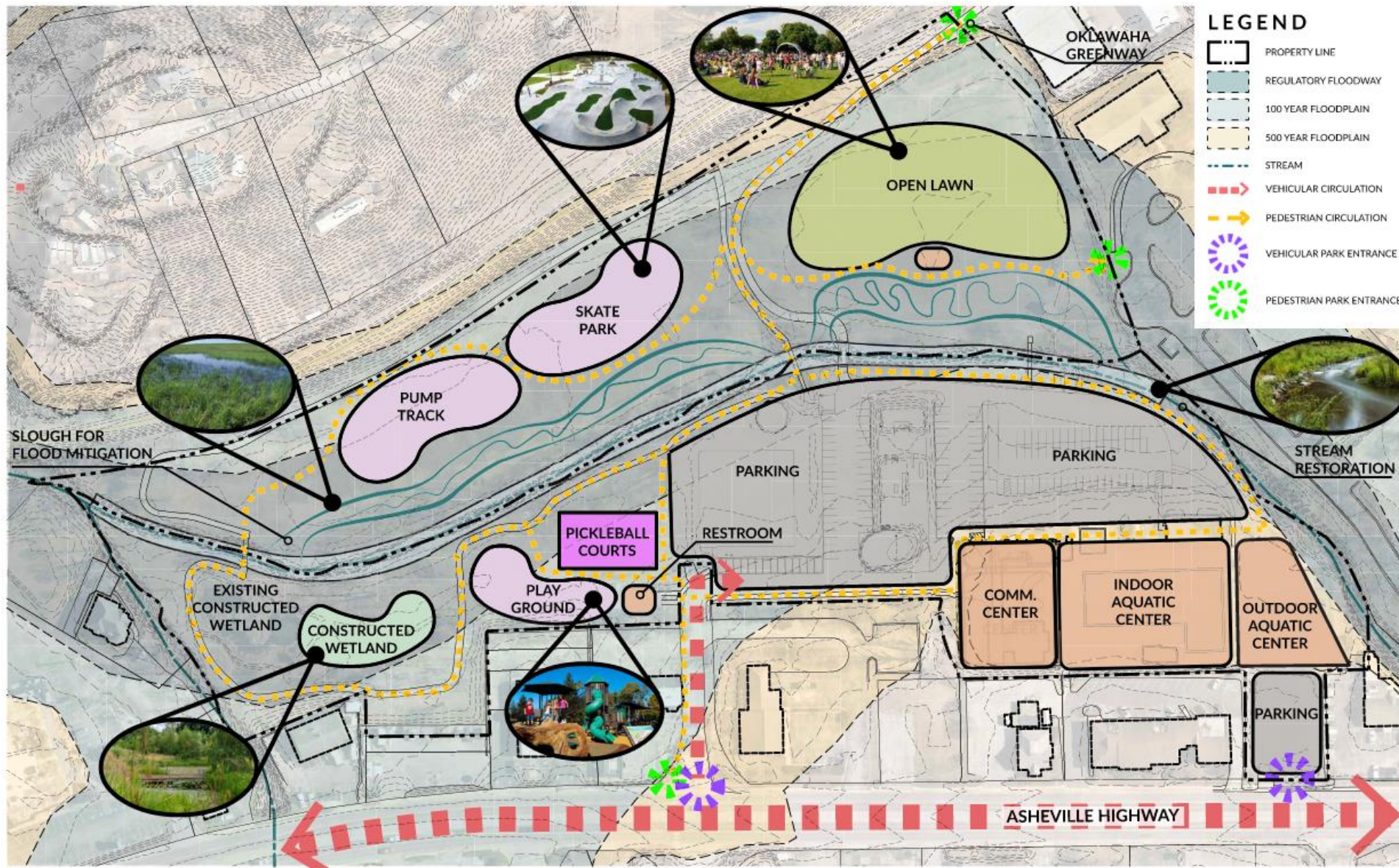
**OUTDOOR  
FITNESS**

# 2B Program

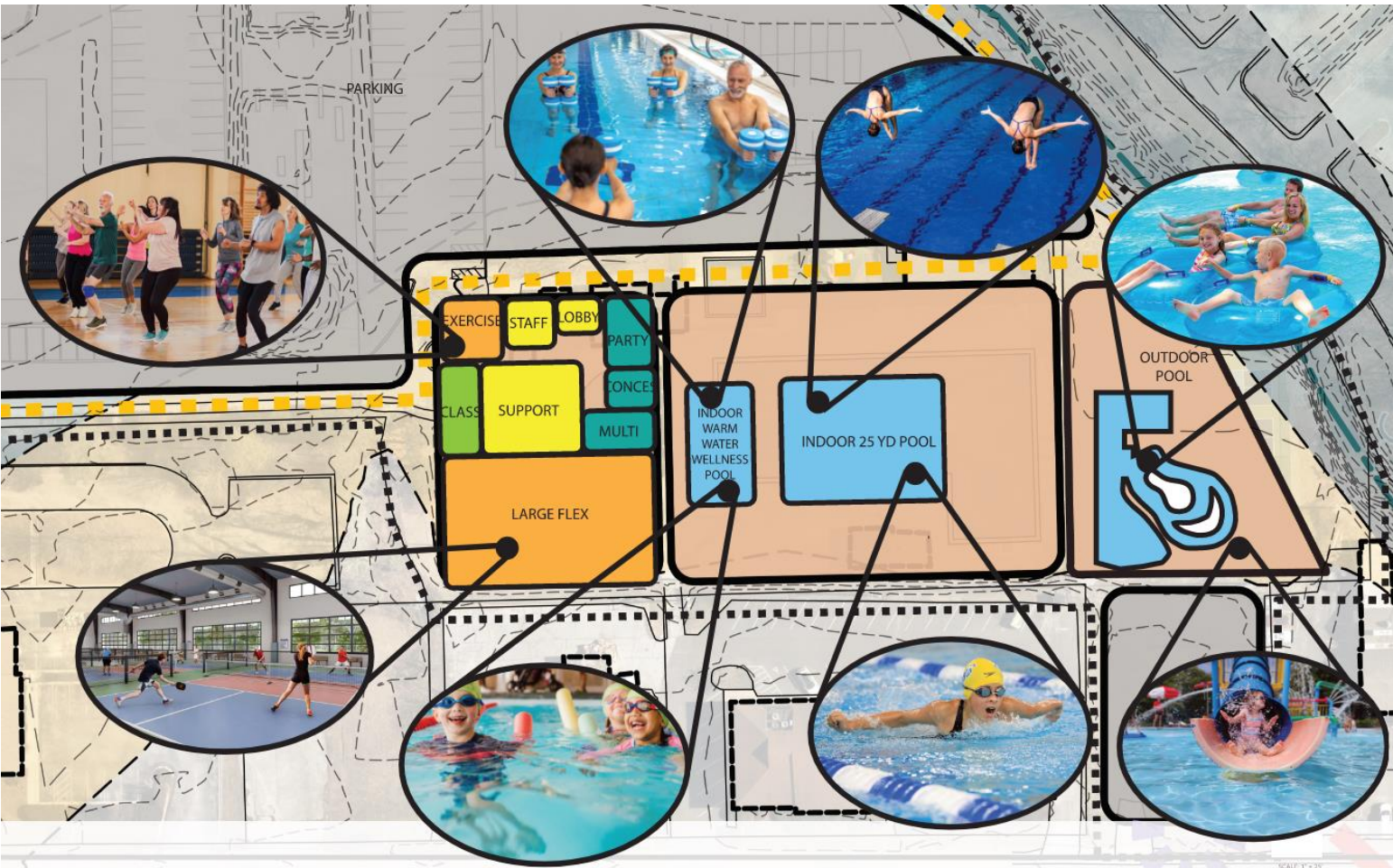
- **17,000 SF Outdoor Aquatics**
  - Lazy River
  - Spray Play
  - Recreational Swim
- **34,500 SF Indoor Aquatics**
  - 25 Yard Pool
  - 3 Lane Warm Water Wellness Pool
  - Event Seating
- **20,000 SF Community Spaces**
  - Large Flex Recreation Space
  - Concessions
  - Exercise Studio
  - Indoor Play
- **Playground**
- **Flexible Recreation**
- **Skate Park**
- **Pump Track**
- **Stream Restoration**
- **Constructed Wetland**
- **Slough**
- **800 SF Trail Restrooms**



## 2B- Site Layout



# 2B- Aquatics & Community



ENTRY / BASE BUILDING

- Lobby - 400 sf
- Restrooms - 400 sf
- Office - 100 sf
- General Storage- 200 sf
- Multi Storage- 300 sf
- Rec Storage- 350

RECREATION

- Large Flex Rec Area- 8,500 sf
- Indoor Play- 400 sf
- Multipurpose Room- 400 sf
- Exercise Studio- 800 sf

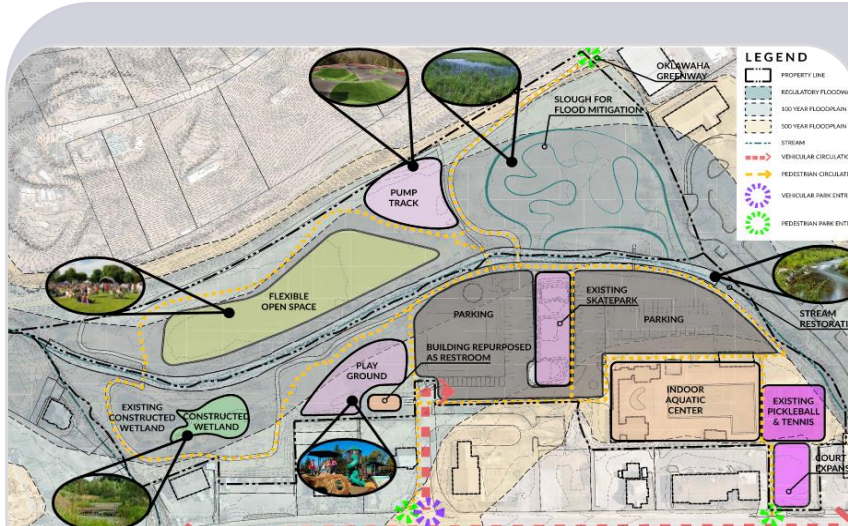
EDUCATION

- Classroom - 300 sf

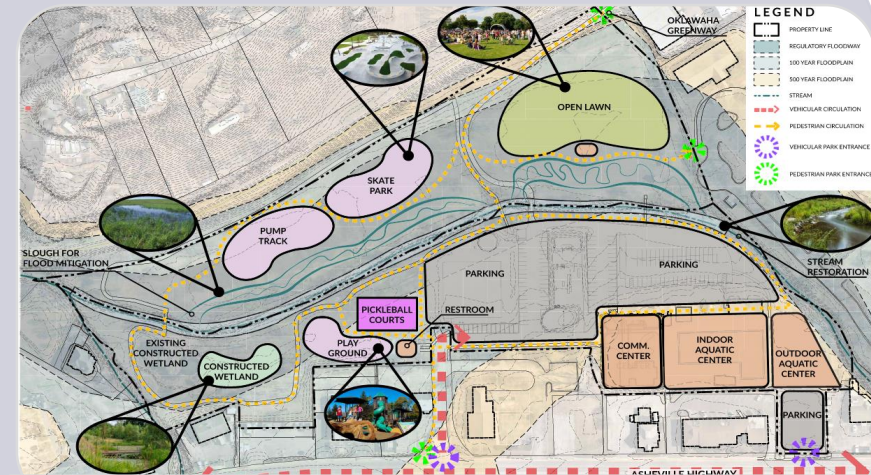
SOCIAL / GATHERING

- Party Room- 350 sf
- Concessions- 300 sf

# Patton Park 2A vs. 2B



**Indoor 50 Meter Pool**  
**Indoor 5 Lane Warm Water Wellness Pool**  
**Pump Track**  
**Flexible Recreation**  
**Playground**  
**Stream Restoration**  
**Constructed Wetland**  
**Slough**  
**Trail Restrooms**



**Outdoor Aquatics**  
**25 Yard Indoor Pool**  
**Indoor 3 Lane Warm Water Wellness Pool**  
**Community Spaces**  
**Playground**  
**Flexible Recreation**  
**Skate Park**  
**Pump Track**  
**Stream Restoration**  
**Constructed Wetland**  
**Slough**  
**Trail Restrooms**

# Thank you!

