

**Recommended Landscape Species List  
for  
Street Trees and Land Development Projects  
in the  
Hendersonville, North Carolina  
Planning Jurisdiction**



**Tree City USA Sterling Community  
& Bee City USA Community**

**City of Hendersonville  
Development Assistance Department  
100 N. King Street  
Hendersonville, NC 28792  
828-697-3010  
[www.hvlnc.gov](http://www.hvlnc.gov)**

Revised & Approved by the Hendersonville Tree Board, March 2016

## Intent

This document does not regulate planting on private property that is not undergoing site plan or development review by the City of Hendersonville. The species listed here are not intended to be all-inclusive and other species may be approved if selected for site appropriateness and functional suitability. Developers are highly encouraged to consult local landscape architects, nurseries and/or landscape contractors. Contact information for other governmental agencies that can offer valuable assistance in plant selection is listed below.

In the following lists of plants, species are listed alphabetically by their botanical/scientific names. Native species are designated by an asterisk(\*). The term “native” refers to plants indigenous to western NC and/or the southeastern US and not necessarily native to Henderson County. Some plants in this greater area may or may not perform in your particular landscape due to the specific ecosystem or microclimate that you may encounter. For example, a Southern Magnolia planted in full sun on a southern facing slope may do well in our area while the same tree planted on a northern exposure at a higher elevation in our area may suffer frost damage each year.

### **TREES AND SHRUBS FOR SCREENING (Pages 4-6)**

This list of plants includes large, medium and small trees along with shrubs that may be used to meet the landscaping requirements of the City of Hendersonville Zoning Ordinance.

### **UNSUITABLE PLANTS (Page 7)**

This is a list of plants that have either been deemed invasive exotic plants by various governmental agencies or institutions or have been found to be structurally unsound in icy or windy conditions. Use of these plants for new plantings is not an option for plans undergoing review by City Planning or Zoning Departments.

### **TREES AND SHRUBS FOR PLANTING UNDER UTILITY LINES (Pages 7-8)**

This plant list provided by Duke Power Company has been revised for the City of Hendersonville, NC to omit species considered lacking in environmental tolerance for western North Carolina. Plants other than those listed on the Duke Power publication may be utilized provided they will not exceed 15 feet in height at maturity. Contact Duke Power at 1-800-632-4949 or visit [www.dukepower.com](http://www.dukepower.com) for further information.

### **DROUGHT TOLERANT PLANTS (Pages 9-10)**

This is a list of plants that have been researched and proven to tolerate prolonged periods of drought without substantial supplemental irrigation. As with any planting design, the location, soil type, and aspect will play a role in their performance. Any plant in this list will require some supplemental irrigation for the first 3-6 months after planting to become established.

### **BIORETENTION OR RAIN GARDEN PLANTS (Pages 10-11)**

All of the plants in this list are native to an area within a 100-mile radius from Hendersonville, NC and should, when possible, be purchased from local nurseries for projects related to bio-retention or in rain gardens. These plants have been determined to be tolerant of prolonged periods of standing water as well periodic dry times.

## **STREAM BANK PLANTS (Pages 11-12)**

This list of plants indigenous to western NC riparian areas should be used in stream bank mitigation and/or repair.

## **WILDLIFE AND POLLINATOR HABITAT PLANTS (Pages 13-16)**

These native plants provide foliage, nectar, pollen, berries, seeds and nuts that many species of wildlife require to survive. As a certified Bee City USA community, Hendersonville strongly encourages planting species that provide nectar and/or pollen for various pollinators such as hummingbirds, bees, butterflies, moths, beetles, etc. and planting larval host plants that provide habitat for butterflies to moths to reproduce. While not exhaustive, the species included in this list have particularly high value to wildlife. Links to additional lists of plants to help create wildlife habitat are also provided.

## **ADDITIONAL LOCAL RESOURCES AND CONTACTS**

### **Henderson County Cooperative Extension**

100 Jackson Park Road  
Henderson County Center  
Hendersonville, NC 28792  
828-697-4891

<http://henderson.ces.ncsu.edu/>

### **City of Hendersonville Development Assistance Department**

100 N. King Street  
Hendersonville, NC 28792  
828-697-3010

[www.hvlnc.gov](http://www.hvlnc.gov)

### **North Carolina Arboretum**

100 Frederick Law Olmstead Way  
Asheville, NC 28806  
828-665-2492

[www.ncarboretum.org](http://www.ncarboretum.org)

### **North Carolina Department of Transportation (NCDOT) Division 14**

Division Roadside Environmental Engineer  
253 Webster Road  
Sylva, NC 28779  
828-631-0272

[www.ncdot.gov](http://www.ncdot.gov)

## TREES AND SHRUBS FOR SCREENING

### LARGE MATURING TREES >50' TALL

Common Name	Botanical/Scientific Name
Autumn Blaze Maple	<i>Acer x freemanii</i> 'Jeffsred'
Armstrong Maple*	<i>Acer rubrum</i> 'Armstrong'
October Glory Maple*	<i>Acer rubrum</i> 'October Glory'
Red Sunset Maple*	<i>Acer rubrum</i> 'Red Sunset'
Sugar Maple*	<i>Acer saccharum</i>
River Birch*	<i>Betula nigra</i>
Deodar Cedar	<i>Cedrus deodara</i>
Katsura Tree	<i>Cercidiphyllum japonicum</i>
American Beech*	<i>Fagus grandifolia</i>
European Beech	<i>Fagus sylvatica</i>
White Ash*	<i>Fraxinus americana</i>
Green Ash*	<i>Fraxinus pennsylvanica</i>
Ginkgo (male)	<i>Ginkgo biloba</i>
Honey Locust	<i>Gleditsia triacanthos</i>
Kentucky Coffeetree*	<i>Gymnocladus dioica</i>
Fruitless Sweet Gum*	<i>Liquidambar styraciflua</i> 'Rotundiloba'
Tulip Tree*	<i>Liriodendron tulipifera</i>
Cucumber Tree*	<i>Magnolia acuminata</i>
Southern Magnolia*	<i>Magnolia grandiflora</i>
Bigleaf Magnolia*	<i>Magnolia macrophylla</i>
Dawn Redwood	<i>Metasequoia glyptostroboides</i>
Eastern White Pine*	<i>Pinus strobus</i>
London Plane Tree	<i>Platanus acerifolia</i>
Sycamore*	<i>Platanus occidentalis</i>
White Oak*	<i>Quercus alba</i>
Northern Red Oak*	<i>Quercus borealis</i>
Scarlet Oak*	<i>Quercus coccinea</i>
Pin Oak*	<i>Quercus palustris</i>
Willow Oak*	<i>Quercus phellos</i>
Red Oak*	<i>Quercus rubra</i>
Weeping Willow	<i>Salix babylonica</i>
Japanese Pagoda Tree	<i>Sophora japonica</i>
Bald Cypress*	<i>Taxodium distichum</i>
Canadian Hemlock*	<i>Tsuga canadensis</i>
Carolina Hemlock*	<i>Tsuga caroliniana</i>
Lacebark Elm	<i>Ulmus parvifolia</i> 'Allee'
Village Green Japanese Zelkova	<i>Zelkova serrata</i> 'Village Green'

\*native plant - indigenous to western NC and/or southeastern US

## MEDIUM MATURING TREES 25' - 50' TALL

Common Name	Botanical/Scientific Name
Norwegian Sunset Maple	<i>Acer truncatum</i> x <i>A. platanoides</i> 'Keithsform'
Upright European Hornbeam	<i>Carpinus betulus</i> 'Fastigiata'
American Hornbeam*	<i>Carpinus caroliniana</i>
American Yellowwood*	<i>Cladrastis lutea</i>
Franklinia*	<i>Franklinia alatamaha</i>
Carolina Silverbell*	<i>Halesia caroliniana</i>
Savannah Holly*	<i>Ilex x attenuata</i> 'Savannah'
American Holly*	<i>Ilex opaca</i>
Eastern Red Cedar*	<i>Juniperus virginiana</i>
Goldenrain Tree	<i>Koelreuteria paniculata</i>
Galaxy Saucer Magnolia	<i>Magnolia galaxy</i>
Saucer Magnolia	<i>Magnolia soulangeana</i>
Sweetbay Magnolia*	<i>Magnolia virginiana</i>
Black Gum*	<i>Nyssa sylvatica</i>
Sourwood*	<i>Oxydendrum arboreum</i>
Norway Spruce	<i>Picea abies</i>
Japanese Black Pine	<i>Pinus thunbergii</i>
Chinese Pistache	<i>Pistacia chinensis</i>
Okame Cherry	<i>Prunus okame</i>
Japanese Stewartia	<i>Stewartia pseudocamellia</i>
Nigra American Arborvitae	<i>Thuja occidentalis</i> 'Nigra'
Littleleaf Linden	<i>Tilia cordata</i>
Greenspire Little Leaf Linden	<i>Tilia cordata</i> 'Greenspire'

## SMALL MATURING TREES < 25' TALL

Common Name	Botanical/Scientific Name
Japanese Maple	<i>Acer palmatum</i>
Serviceberry*	<i>Amelanchier canadensis</i>
Allegheny Serviceberry*	<i>Amelanchier laevis</i>
Cole's Select Serviceberry	<i>Amelanchier x grandiflora</i> 'Cole's Select'
Eastern Redbud*	<i>Cercis canadensis</i>
Chinese Fringe Tree	<i>Chionanthus retusus</i>
Fringe Tree*	<i>Chionanthus virginicus</i>
Pagoda Dogwood*	<i>Cornus alternifolia</i>
Appalachian Blush* Dogwood	<i>Cornus florida</i>
Appalachian Mist* Dogwood	<i>Cornus florida</i>
Appalachian Spring* Dogwood	<i>Cornus florida</i>

\*native plant - indigenous to western NC and/or southeastern US

Flowering Dogwood*	<i>Cornus florida</i>
Kousa Dogwood	<i>Cornus kousa</i>
Spring Glory Dogwood	<i>Cornus mas</i>
Washington Hawthorn*	<i>Crataegus phaenopyrum</i>
Winter King Hawthorn*	<i>Crataegus viridis</i>
Foster Holly #2*	<i>Ilex x attenuata</i> 'Fosteri'
Nellie R. Stevens Holly	<i>Ilex x</i> 'Nellie R. Stevens'
Natchez Crape Myrtle	<i>Lagerstroemia faurei</i> 'Natchez'
Sugar Tyme Crabapple	<i>Malus</i> 'Sutyzam'
Sargent's Crabapple	<i>Malus sargentii</i>
Flowering Crabapple	<i>Malus</i> spp.
Redleaf Plum	<i>Prunus cerasifera</i>
Japanese Cherry	<i>Prunus serrulata</i>
Weeping Cherry	<i>Prunus subhirtella</i> 'Pendula'
Japanese Snowbell	<i>Styrax japonicus</i>
Nannyberry Viburnum	<i>Viburnum lentago</i>

## SHRUBS

Common Name	Botanical/Scientific Name
Glossy Abelia	<i>Abelia grandiflora</i>
Wintergreen Barberry	<i>Berberis julianae</i>
American Boxwood	<i>Buxus sempervirens</i>
Chinese Holly	<i>Ilex cornuta</i>
Japanese Holly	<i>Ilex crenata</i> 'Convexa'
Hetzi Holly	<i>Ilex crenata</i> 'Hetzi'
Perny Holly	<i>Ilex pernyi</i>
Hetz's Juniper	<i>Juniperus chinensis</i> 'Hetzi'
Mountain Laurel*	<i>Kalmia latifolia</i>
Japanese Andromeda	<i>Pieris japonica</i>
Skip (Schipka) Laurel	<i>Prunus laurocerasus schipkaensis</i>
Orange Firethorn	<i>Pyracantha coccinea</i>
Carolina Rhododendron*	<i>Rhododendron carolinianum</i>
Hybrid Rhododendron	<i>Rhododendron hybrida</i>
Japanese Yew	<i>Taxus cuspidata</i>
Doublefile Viburnum	<i>Viburnum plicatum tomentosum</i>
Leatherleaf Viburnum	<i>Viburnum rhytidophyllum</i>
Sandankwa Viburnum	<i>Viburnum suspensum</i>

\*native plant - indigenous to western NC and/or southeastern US

## UNSUITABLE PLANTS

<b>Common Name</b>	<b>Botanical/Scientific Name</b>
Norway Maple	<i>Acer platanoides</i>
Silver Maple	<i>Acer saccharinum</i>
Mimosa	<i>Albizia julibrissin</i>
Porcelain Berry	<i>Ampelopsis brevipedunculata</i>
Oriental Bittersweet	<i>Celastrus orbiculatus</i>
Russian Olive	<i>Elaeagnus angustifolia</i>
Autumn Olive	<i>Elaeagnus pungens</i>
Thorny Olive	<i>Elaeagnus umbellata</i>
Burning Bush Euonymus	<i>Euonymus alatus</i>
Wintercreeper	<i>Euonymus fortunei</i>
English Ivy	<i>Hedera helix</i>
Japanese Privet	<i>Ligustrum japonicum</i>
Chinese Privet	<i>Ligustrum sinense</i>
Japanese Honeysuckle	<i>Lonicera japonica</i>
Oregon Grape	<i>Mahonia bealei</i>
Japanese Stiltgrass	<i>Microstegium vimineum</i>
Chinese Silvergrass	<i>Miscanthus sinensis</i>
Princess Tree	<i>Paulownia tomentosa</i>
Bradford Pear	<i>Prunus calleryana</i> 'Bradford'
Multiflora Rose	<i>Rosa multiflora</i>
Common Periwinkle	<i>Vinca minor</i>
Large leaf Periwinkle	<i>Vinca major</i>
Japanese Wisteria	<i>Wisteria floribunda</i>
Chinese Wisteria	<i>Wisteria sinensis</i>

## TREES AND SHRUBS FOR PLANTING UNDER UTILITY LINES

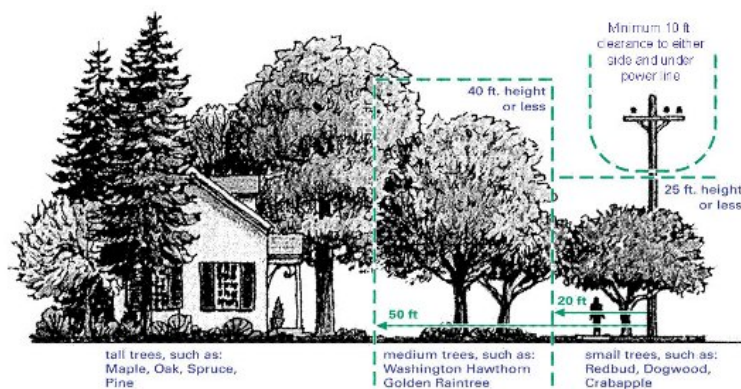
### SMALL MATURING TREES < 25' TALL

<b>Common Name</b>	<b>Botanical/Scientific Name</b>
Japanese Maple	<i>Acer palmatum</i> (selected cultivars)
Tatar or Tatarian Maple	<i>Acer tataricum</i>
Bottlebrush Buckeye*	<i>Aesculus parvifolia</i>
Serviceberry*	<i>Amelanchier canadensis</i>
Japanese Cleyera	<i>Ternstroemia</i> ( <i>Cleyera</i> ) <i>japonica</i>
Cornelian Cherry	<i>Conus mas</i>
Fragrant Winterhazel	<i>Corylopsis glabescens</i>
American Filbert*	<i>Corylus americana</i>
Common Smoketree	<i>Cotinus coggygria</i>

\*native plant - indigenous to western NC and/or southeastern US

Pearlbush	<i>Exochorda racemosa</i>
Chinese Witchhazel	<i>Hamamelis mollis</i>
Vernal Witchhazel	<i>Hamamelis vernalis</i>
Panicle Hydrangea	<i>Hydrangea paniculata</i>
Oak-leaved Hydrangea*	<i>Hydrangea quercifolia</i>
Dwarf Burford Holly	<i>Ilex cornuta burfordi nana</i>
Japanese Holly	<i>Ilex crenata</i>
Possumhaw*	<i>Ilex decidua</i>
Winterberry*	<i>Ilex verticillata</i>
Yaupon* Holly	<i>Ilex vomitoria</i>
Hetzi Juniper	<i>Juniperus chinensis 'Hetzi'</i>
Beautybush	<i>Kolkwitzia amabilis</i>
Loropetalum	<i>Loropetalum chinense</i>
Star Magnolia	<i>Magnolia stellata</i>
Wax Myrtle*	<i>Myrica cerifera</i>
Holly Jolivette Flowering Cherry	<i>Prunus 'Holly Jolivette'</i>
Japanese Flowering Apricot	<i>Prunus mume</i>
Okame Cherry	<i>Prunus x incamp 'Okame'</i>
Common Lilac	<i>Syringa vulgaris</i>
Burkwood Viburnum	<i>Viburnum burkwoodi</i>
Linden Viburnum	<i>Viburnum dilatatum</i>
Japanese Viburnum	<i>Viburnum japonicum</i>
Doublefile Viburnum	<i>Viburnum plicatum var. tomentosum</i>
Blackhaw Viburnum*	<i>Viburnum prunifolium</i>
Lantanaphyllum Viburnum	<i>Viburnum rhytidophyloides</i>
Leatherleaf Viburnum	<i>Viburnum rhytidophyllum</i>
Sargent's Viburnum	<i>Viburnum sargentii</i>
Chastetree	<i>Vitex agnus-castus</i>
Cut-leaf Chastetree	<i>Vitex negundo</i>

### Planting Trees Near Distribution Lines



\*native plant - indigenous to western NC and/or southeastern US



## DROUGHT TOLERANT PLANTS

### LARGE MATURING TREES >50' TALL

Common Name	Botanical/Scientific Name
Autumn Blaze Maple	<i>Acer x freemanii</i> 'Autumn Blaze'
Pignut Hickory*	<i>Carya glabra</i>
Mockernut Hickory*	<i>Carya tomentosa</i>
Deodar Cedar	<i>Cedrus deodara</i>
Lacebark Pine	<i>Pinus bungeana</i>
White Oak*	<i>Quercus alba</i>
Pin Oak*	<i>Quercus palustris</i>
Bald Cypress*	<i>Taxodium distichum</i>
Urban American Elm*	<i>Ulmus americana</i> 'Urban'
Lacebark Elm	<i>Ulmus parvifolia</i>

### SMALL - MEDIUM MATURING TREES < 50' TALL

Common Name	Botanical/Scientific Name
Trident Maple	<i>Acer buergerianum</i>
Red Buckeye*	<i>Aesculus pavia</i>
Eastern Redbud*	<i>Cercis canadensis</i>
Chinese Fringe Tree	<i>Chionanthus retusus</i>
White Fringe Tree*	<i>Chionanthus virginicus</i>
American Yellowwood*	<i>Cladrastis lutea</i>
Kousa Dogwood	<i>Cornus kousa</i>
American Smoke Tree*	<i>Cotinus obovatus</i> or <i>C. x 'Grace'</i>
Winter King Green Hawthorn*	<i>Crataegus viridis</i> 'Winter King'
Arizona Cypress	<i>Cupressus arizonica</i>
Dwarf Loblolly Pine*	<i>Pinus taeda</i> 'Nana'
Chinese Pistache	<i>Pistachia chinensis</i>

### SHRUBS

Common Name	Botanical/Scientific Name
Red Chokeberry*	<i>Aronia arbutifolia</i>
Wintergreen Barberry	<i>Berberis julianae</i>
American Beautyberry*	<i>Callicarpa americana</i>
Bluebeard	<i>Caryopteris x clandonensis</i>
Japanese Plum Yew	<i>Cephalotaxus harringtonia</i>
Dwarf Hinoki False Cypress	<i>Chamaecyparis obtusa</i> 'Nana Gracilis'
Southern Bush-honeysuckle*	<i>Diervilla sessilifolia</i>
Dwarf Fothergilla*	<i>Fothergilla gardenia</i>

\*native plant - indigenous to western NC and/or southeastern US

Aaronsbeard St. Johnswort	<i>Hypericum calycinum</i>
Carissa Chinese Holly	<i>Ilex cornuta</i> 'Carissa'
Winterberry Holly*	<i>Ilex verticillata</i>
Yaupon Holly*	<i>Ilex vomitoria</i>
Sweetspire*	<i>Itea virginica</i>
Hollywood Juniper	<i>Juniperus chinensis</i> 'Kaizuka'
Sweet Gum*	<i>Liquidambar styraciflua</i>
Pink Loropetalum	<i>Loropetalum chinense</i> var. <i>rubrum</i>
Wax Myrtle*	<i>Myrica cerifera</i>
Summer Wine Ninebark*	<i>Physocarpus opulifolius</i> 'Summer Wine'
Firethorn	<i>Pyracantha</i> spp.
Piedmont Azalea*	<i>Rhododendron canescens</i>
Cutleaf Staghorn Sumac*	<i>Rhus typhina</i> 'Lacianata'
Flameleaf (Winged) Sumac*	<i>Rhus copallina</i>
Landscape Roses	<i>Rosa</i> spp.
Magic Carpet Bumald Spirea	<i>Spiraea x bumalda</i> 'Magic Carpet'
Koreanspice Viburnum	<i>Viburnum x carlesii</i>
Arrowwood Viburnum*	<i>Viburnum dentatum</i>
Prague Viburnum	<i>Viburnum x pragense</i>

## BIORETENTION OR RAIN GARDEN PLANTS

### SMALL - MEDIUM MATURING TREES < 50' TALL

Common Name	Botanical/Scientific Name
Red Maple*	<i>Acer rubrum</i>
Tag Alder*	<i>Alnus serrulata</i>
Black Alder*	<i>Alnus nigra</i>
Serviceberry*	<i>Amelanchier arborea</i>
Pawpaw*	<i>Asimina triloba</i>
Pagoda Dogwood*	<i>Cornus alternifolia</i>
Silky Dogwood*	<i>Cornus amomum</i>
Sweet or Cherry Birch*	<i>Betula lenta</i>
River Birch*	<i>Betula nigra</i>
American Holly*	<i>Ilex opaca</i>
Spicebush*	<i>Lindera benzoin</i>
Sweetbay Magnolia*	<i>Magnolia virginiana</i>
Grey Willow*	<i>Salix nigra</i>

\*native plant - indigenous to western NC and/or southeastern US

## SHRUBS

Common Name	Botanical/Scientific Name
Switch Cane*	<i>Arundinaria gigantea</i>
American Beautyberry*	<i>Callicarpa americana</i>
Button Bush*	<i>Cephalanthus occidentalis</i>
Clethra*	<i>Clethra acuminata</i>
Hazelnut (American Filbert)*	<i>Corylus americana</i>
Hearts-a-bustin*	<i>Euonymus americanus</i>
Rose Mallow*	<i>Hibiscus moscheutos</i>
Possumhaw*	<i>Ilex decidua</i>
Inkberry Holly (Gallberry)*	<i>Ilex glabra</i>
Winter Berry*	<i>Ilex verticillata</i>
Sweetspire*	<i>Itea virginica</i>
Wax Myrtle*	<i>Myrica cerifera</i>
Ninebark*	<i>Physocarpus opulifolius</i>
Swamp Azalea*	<i>Rhododendron viscosum</i>
Swamp Rose*	<i>Rosa palustris</i>
American Elderberry*	<i>Sambucus canadensis</i>
Meadowsweet*	<i>Spirea latifolia</i>
Steeplebush (Hardtack)*	<i>Spirea tomentosa</i>
Witherod*	<i>Viburnum cassinoides</i>
Arrowwood*	<i>Viburnum dentatum</i>
Blueberry, Cranberry...*	<i>Vaccinium spp.</i>

## STREAM BANK PLANTS

### LARGE MATURING TREES >50' TALL

Common Name	Botanical/Scientific Name
Red Maple*	<i>Acer rubrum</i>
Yellow Buckeye*	<i>Aesculus octandra</i>
Sweet or Cherry Birch*	<i>Betula lenta</i>
River Birch*	<i>Betula nigra</i>
American Hornbeam*	<i>Carpinus caroliniana</i>
Green Ash*	<i>Fraxinus pennsylvanica</i>
Carolina Silverbell*	<i>Halesia caroliniana</i>
Sweet Gum*	<i>Liquidambar styraciflua</i>
Black Gum, Black Tupelo*	<i>Nyssa sylvatica</i>
Sycamore*	<i>Platanus occidentalis</i>
Black Cherry*	<i>Prunus serotina</i>
Basswood*	<i>Tilia americana</i>

\*native plant - indigenous to western NC and/or southeastern US

## SMALL - MEDIUM MATURING TREES < 50' TALL

Common Name	Botanical/Scientific Name
Boxelder*	<i>Acer negundo</i>
Tag Alder*	<i>Alnus serrulata</i>
Black Alder*	<i>Alnus nigra</i>
Serviceberry*	<i>Amelanchier arborea</i>
Pawpaw*	<i>Asimina triloba</i>
Pagoda Dogwood*	<i>Cornus alternifolia</i>
Silky Dogwood*	<i>Cornus amomum</i>
Cockspur Hawthorn*	<i>Craetagus crusgalli</i>
Spicebush*	<i>Lindera benzoin</i>
Umbrella Tree*	<i>Magnolia tripeolata</i>
Grey Willow*	<i>Salix nigra</i>
Silky Willow*	<i>Salix sericea</i>

## SHRUBS

Common Name	Botanical/Scientific Name
Red Chokeberry*	<i>Aronia arbutifolia</i>
Switch Cane*	<i>Arundinaria gigantea</i>
Clethra*	<i>Clethra acuminata</i>
Hazelnut (American Filbert)*	<i>Corylus americana</i>
Winter Berry*	<i>Ilex verticillata</i>
Sweetspire*	<i>Itea virginica</i>
Dog Hobble*	<i>Leucothoe axillaris</i>
Fetterbush*	<i>Lyonia ligustrina</i>
Native Deciduous Azaleas*	<i>Rhododendron</i> spp.
Swamp Rose*	<i>Rosa palustris</i>
Meadowsweet*	<i>Spirea latifolia</i>
Steeplebush (Hardtack)*	<i>Spirea tometosa</i>
Witherod*	<i>Viburnum cassinoides</i>
Arrowwood*	<i>Viburnum dentatum</i>

\*native plant - indigenous to western NC and/or southeastern US

## WILDLIFE AND POLLINATOR HABITAT PLANTS

### LARGE MATURING TREES >50' TALL

Common Name	Botanical/Scientific Name	Habitat Notes
Red Maple*	<i>Acer rubrum</i>	nectar, pollen (crucial early spring source), seeds
American Beech*	<i>Fagus grandifolia</i>	beechnuts
Honey Locust	<i>Gleditsia triacanthos</i>	nectar, pollen, seeds
Sweet Gum*	<i>Liquidambar styraciflua</i>	seeds
Tulip Tree*	<i>Liriodendron tulipifera</i>	nectar, pollen, seeds, host plant for tiger swallowtail butterflies
Magnolias	<i>Magnolia</i> spp.	fruits
Black Gum/Tupelo*	<i>Nyssa sylvatica</i>	nectar, fruits
Pines*	<i>Pinus</i> spp.	seeds
Black Cherry*	<i>Prunus serotina</i>	nectar, pollen, fruits, butterfly host plant
Oaks*	<i>Quercus</i> spp.	acorns, host plant for > 500 moths and butterflies
Black Locust*	<i>Robinia pseudoacacia</i>	nectar, pollen, seeds
Basswood (Linden)*	<i>Tilia americana</i>	nectar, pollen

### SMALL - MEDIUM MATURING TREES < 50' TALL

Common Name	Botanical/Scientific Name	Habitat Notes
Bottlebrush Buckeye*	<i>Aesculus parvifolia</i>	nectar (for hummingbirds)
Red Buckeye*	<i>Aesculus pavia</i>	nectar (for hummingbirds)
Serviceberry*	<i>Amelanchier canadensis</i>	nectar, pollen, fruits, host plant for butterflies
Allegheny Serviceberry*	<i>Amelanchier laevis</i>	nectar, pollen, fruits, host plant for butterflies
Devil's Walking Stick*	<i>Aralia spinosa</i>	nectar, pollen, fruits
Pawpaw*	<i>Asimina triloba</i>	fruits, host plant for zebra swallowtail butterflies
Chinquapin*	<i>Castanea pumila</i>	nuts
Eastern Redbud*	<i>Cercis canadensis</i>	nectar, pollen, seeds
Flowering Dogwood*	<i>Cornus florida</i>	nectar, pollen, fruits
Hawthorn*	<i>Crataegus</i> spp.	nectar, pollen, fruits
Carolina Silverbell*	<i>Halesia caroliniana</i>	nectar, pollen

Holly*	<i>Ilex</i> spp.	nectar, pollen, fruits
Eastern Red Cedar*	<i>Juniperus virginiana</i>	berry-like cones, host plant for >30 moths and butterflies
Spicebush*	<i>Lindera benzoin</i>	fruits, host plant for spicebush swallowtail butterflies
Wax Myrtle*	<i>Myrica cerifera</i>	fruits
Sourwood*	<i>Oxydendrum arboreum</i>	nectar (major source)
American Plum*	<i>Prunus americana</i>	nectar, pollen, fruits
Sassafras*	<i>Sassafras albidum</i>	nectar, pollen, fruits, host plant for spicebush swallowtail butterflies

## SHRUBS

Common Name	Botanical/Scientific Name	Habitat Notes
Hercules Club*	<i>Aralia spinosa</i>	nectar, pollen, fruits
Red Chokeberry*	<i>Aronia arbutifolia</i>	nectar, pollen, fruits
American Beautyberry*	<i>Callicarpa americana</i>	nectar, pollen, fruits
New Jersey Tea*	<i>Ceanothus americanus</i>	nectar, pollen, host plant for butterflies
Button Bush*	<i>Cephalanthus occidentalis</i>	nectar, pollen, seeds
Clethra*	<i>Clethra acuminata</i>	nectar, pollen, fruits
Southern Bush Honeysuckle*	<i>Diervilla sessilifolia</i>	nectar, pollen
Hearts-a-bustin'*	<i>Euonymus americanus</i>	nectar, fruits
Witchhazel*	<i>Hamamelis virginiana</i>	nectar, pollen
St. John's Wort*	<i>Hypericum</i> spp.	nectar, pollen
Inkberry (Gallberry)*	<i>Ilex glabra</i>	nectar, pollen, fruits
Sweetspire*	<i>Itea virginica</i>	nectar, pollen
Spicebush*	<i>Lindera benzoin</i>	nectar, pollen, fruits, host plant for spicebush swallowtail butterflies
Eastern Ninebark*	<i>Physocarpus opulifolius</i>	nectar, pollen
Deciduous Azaleas*	<i>Rhododendron</i> spp.	nectar, pollen
Sumac*	<i>Rhus copallina</i>	nectar, pollen
Blackberry*	<i>Rubus</i> spp.	nectar, pollen, fruits
American Elderberry*	<i>Sambucus canadensis</i>	nectar, pollen, fruits
Meadowsweet*	<i>Spirea latifolia</i>	nectar, pollen
Viburnum*	<i>Viburnum</i> spp.	nectar, pollen, fruits

\*native plant - indigenous to western NC and/or southeastern US

## VINES

Common Name	Botanical/Scientific Name	Habitat Notes
Dutchman's Pipe*	<i>Aristolochia macrophylla</i>	host plant for pipevine swallowtail butterflies
Crossvine*	<i>Bignonia capreolata</i>	nectar, pollen
Trumpet Creeper*	<i>Campis radicans</i>	nectar (for hummingbirds)
Virgin's Bower*	<i>Clematis virginiana</i>	nectar, pollen, seeds
Trumpet Honeysuckle*	<i>Lonicera sempervirens</i>	nectar (for hummingbirds)
Virginia Creeper*	<i>Parthenocissus quinquefolia</i>	fruits
Passionvine (Maypop)*	<i>Passiflora incarnata</i>	nectar, pollen, host plant for gulf and variegated fritillary butterflies

## WILDFLOWERS

Common Name	Botanical/Scientific Name	Habitat Notes
Columbine*	<i>Aquilegia canadensis</i>	nectar (for hummingbirds)
Milkweed*	<i>Asclepias</i> spp.	nectar, host plant for monarch butterflies
Aster*	<i>Aster</i> spp.	nectar, pollen, host plant for pearl crescent butterflies
Blue False Indigo*	<i>Baptisia australis</i>	nectar, pollen, host plant for butterflies
Yellow Wild Indigo*	<i>Baptisia tinctoria</i>	nectar, pollen
Coreopsis*	<i>Coreopsis</i> spp.	nectar, pollen, seeds
Purple Coneflower*	<i>Echinacea purpurea</i>	nectar, pollen, seeds, host plant for silvery checkerspot butterflies
Mistflower*	<i>Eupatorium coelestinum</i>	nectar, pollen
Joe-Pye-Weed*	<i>Eutrochium</i> spp.	nectar, pollen
Common Sneezeweed*	<i>Helenium autumnale</i>	nectar, pollen
Sunflower*	<i>Helianthus</i> spp.	nectar, pollen, seeds
Jewelweed*	<i>Impatiens capensis</i>	nectar (for hummingbirds)
Blazing Star*	<i>Liatris spicata</i>	nectar, pollen, seeds
Cardinal Flower*	<i>Lobelia cardinalis</i>	nectar (for hummingbirds)
Great Blue Lobelia*	<i>Lobelia siphilitica</i>	nectar, pollen
Monarda*	<i>Monarda</i> spp.	nectar, pollen
Phlox*	<i>Phlox</i> spp.	nectar, pollen

\*native plant - indigenous to western NC and/or southeastern US

Mountain Mint*	<i>Pycnanthemum</i> spp.	nectar, pollen
Black-eyed Susan*	<i>Rudbeckia fulgida</i>	nectar, pollen, seeds
Goldenrod*	<i>Solidago</i> spp.	nectar, pollen
Wingstem (Crownbeard)*	<i>Verbesina alternifolia</i>	nectar, pollen
Ironweed*	<i>Vernonia noveboracensis</i>	nectar, pollen
Culvers Root*	<i>Veronicastrum virginicum</i>	nectar, pollen
Golden Alexanders*	<i>Zizia aurea</i>	nectar, pollen, host plant for black swallowtail butterflies

### Additional Resources:

Landscaping for Wildlife with Native Plants - North Carolina Cooperative Extension Service

<http://content.ces.ncsu.edu/landscaping-for-wildlife-with-native-plants>

Pollinator Conservation Guide - North Carolina Cooperative Extension Service

<https://growingsmallfarms.ces.ncsu.edu/growingsmallfarms-pollinatorconservation/>

How to Create a Wildlife-Friendly Garden - National Wildlife Federation

<http://www.nwf.org/How-to-Help/Garden-for-Wildlife/Create-a-Habitat.aspx>

Backyard Conservation - Natural Resources Conservation Service

[http://www.nrcs.usda.gov/Internet/FSE\\_DOCUMENTS/nrcs143\\_023308.pdf](http://www.nrcs.usda.gov/Internet/FSE_DOCUMENTS/nrcs143_023308.pdf)

Recommended Planting Guides - Bee City USA

<http://www.beecityusa.org/resources.html>

Southeast Pollinator Plant List - Xerces Society

[http://www.xerces.org/wp-content/uploads/2015/03/SoutheastPlantList\\_web.pdf](http://www.xerces.org/wp-content/uploads/2015/03/SoutheastPlantList_web.pdf)

Selecting Plants for Pollinators: Central Appalachian Ecoregion - Pollinator Partnership

<http://pollinator.org/PDFs/Guides/CentralAppalachianrx7FINAL.pdf>

\*native plant - indigenous to western NC and/or southeastern US