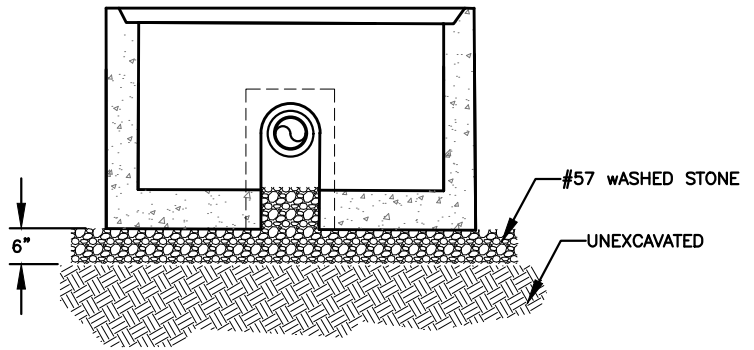


SECTION VIEW B-B

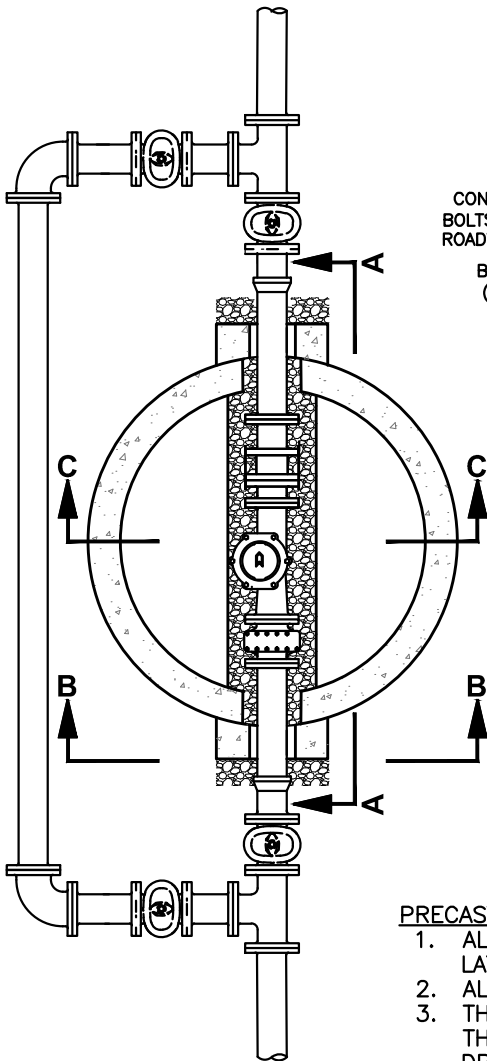
NOT TO SCALE



BASE FOUNDATION CONSTRUCTED LEVEL WITH #57 STONE AS REQUIRED BY SPECIFICATIONS

SECTION VIEW C-C

NOT TO SCALE



PLAN VIEW

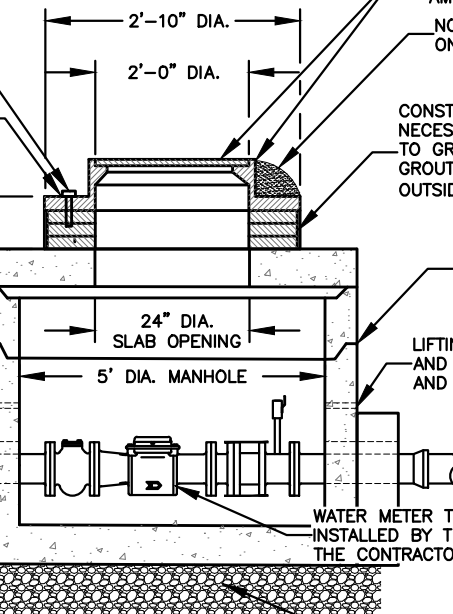
NOT TO SCALE

CONCRETE ANCHOR BOLTS (4) IN NON-ROADWAY LOCATIONS

BITUMINOUS GASKET (BOLT DOWN ONLY)

1'4" MAX.

2'-0" (MIN.)



SECTION VIEW A-A

NOT TO SCALE

STANDARD OR WATERTIGHT MANHOLE FRAME AND COVER W/ GASKETS AND STAINLESS STEEL BOLTS AS NOTED ON DRAWINGS AND AMI MXU COMPATIBLE LID
NON-SHRINK GROUT WITHIN 1" ON MANHOLES SET IN ROADS

CONSTRUCT CONCRETE BRICK RISERS AS NECESSARY TO BRING TOP OF RIM AND COVER TO GRADE OR USE PRECAST CONCRETE RINGS. GROUT ALL JOINTS AND PLASTER INSIDE AND OUTSIDE OF RISERS MINIMUM OF 1/2" THICK.

ALL JOINTS BETWEEN PRECAST SECTIONS SHALL BE SEALED WITH A DOUBLE ROW OF AN APPROVED BITUMINOUS SEALANT OR GASKET, INTERIOR JOINTS ARE TO BE PLASTERED WITH MORTAR.

LIFTING HOLES SHALL BE FILLED AND PLASTERED ON BOTH EXTERIOR AND INTERIOR WALLS WITH MORTAR.

WATER METER TO BE PROVIDED AND INSTALLED BY THE CITY OF HENDERSONVILLE. THE CONTRACTOR SHALL COORDINATE INSTALLATION.

BASE FOUNDATION TO BE CONSTRUCTED LEVEL WITH #57 WASHED STONE AS REQUIRED BY SPECIFICATIONS.

PRECAST MANHOLE NOTES:

1. ALL PRECAST MANHOLE COMPONENTS SHALL MEET REQUIREMENTS OF ASTM C-478, LATEST REVISION AND ASTM C-890.
2. ALL MANHOLES SHALL BE CONSTRUCTED PLUMB.
3. THE PRECAST SUPPLIER SHALL BE RESPONSIBLE FOR THE STRUCTURAL DESIGN OF THE STRUCTURE AND, WHEN REQUESTED BY THE ENGINEER, SHALL SUBMIT SHOP DRAWINGS AND DESIGN CALCULATIONS WHICH HAVE BEEN SIGNED AND SEALED BY A REGISTERED STRUCTURAL ENGINEER.
4. ALL MANHOLE GRADES SHOWN ON THE PLANS ARE FOR THE INVERT OF THE MANHOLE CENTER.
5. IF THE MANHOLE IS SET IN A LOCATION OF HIGH WATER TABLE OR UNDERGROUND WATER IS ENCOUNTERED, THE CONTRACTOR SHALL INSTALL UNDERDRAINS AND STONE AS DIRECTED IN THE FIELD BY THE ENGINEER.
6. STEPS SHALL BE INSTALLED ON STRAIGHT SIDE OF MANHOLE.

DATE: 08/08/2020

WD DWG. NO. 19

SCALE: NOT TO SCALE

City of Hendersonville Engineering Department
305 Williams Street
Hendersonville, NC 28792
(828) 697-3000 (office)

www.cityofhendersonville.org

**NEW MANHOLE CONSTRUCTED
OVER WATERLINE**

